

Service Pack: 1.2 Build: 20220211

Enhancements

- 20220202 – Local Path: The warning message to move the customized message files to local installation folder is now shown to administrators only.
- 20220202 - DBWShell (SendEmail command): when using TLS for a SMTP connection, a new parameter has been added in the *emailDefinitionTxtFile* to manage the AUTH mode:

TLS_AUTH_MODE <mode>

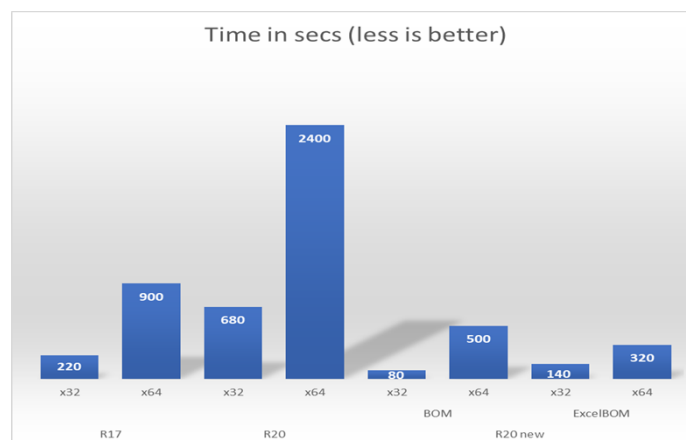
Where <mode> can be PLAIN or LOGIN

If this option is not specified, the default is “LOGIN”

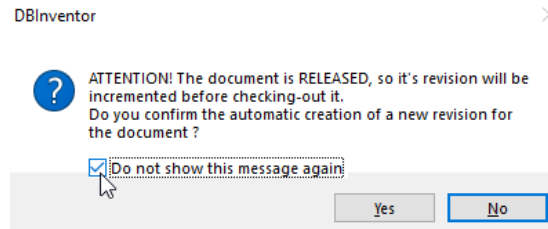
Example:

```
USE_TLS
TLS_AUTH_MODE PLAIN
```

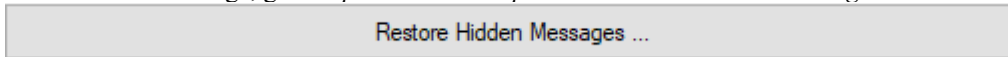
- 20220201 - Scripting: new DBWShell command *IsPathInNoDBDirectories*
This command check the options “General->Only store/Do not store records for documents within the following directories” and returns whether or not the path is in No DB Directories.
Parameters:
documentPath - full path name of the document
Results:
@OK_IS_PATH_IN_NO_DB_DIRECTORIES - a boolean, TRUE if the document is not in the managed directories, FALSE otherwise
- 20220131 - GetBOMTable, the API function used to retrieve data for filling BOMs in drawings and exchanging data with ERP shows a substantial increase in speed compared to both previous R20 and R17. The most substantial gain can be experienced in 64 bits invocation, although 32 bit invocation is still slightly faster.
The function getBOMTable, defined in the object MWScriptGUI.BOM has been defined also in the object MWScriptGUI.ExcelBOM with the same signature (the same parameters), having the difference that this new implementation uses entirely the new Excel BOM Engine with some new data structure in memory to increase speed. The results for the same large assembly are as follows:



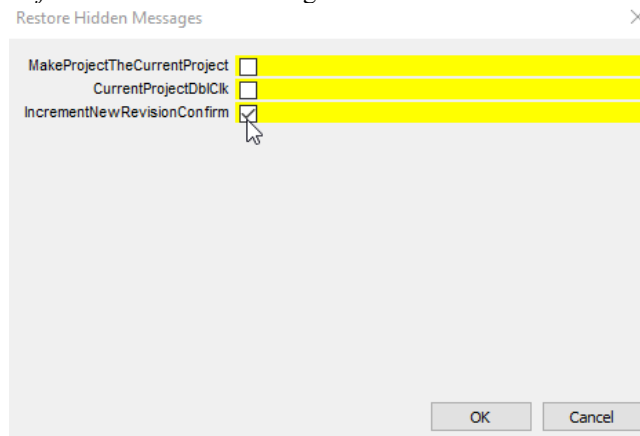
- 20220126 - Usability: Added a new sup-option “Environment->[x]Use DBWorks for Searching SolidWorks Components->[/]Empty dialog text on Replace” (disabled by default). When active, the search string text in dialog for component search will no longer display the name of the current component to replace
- 20220120 - Usability: Added confirmation dialog after Increment Revision action is launched from commands:
 - [Increment Revision State=>Checkout] from both Tree and Grid right mouse button drop down menus.
 - [Create new Revision] from Open Document right mouse button drop down menu.
 Added “[X] Do not show this message again” checkbox to Increment Revision confirmation dialog



To restore the message, go to *Options->User Options->Restore Hidden Messages*



Select *IncrementNewRevisionConfirm* from Hidden Message List



- 20220112 – Scripting: Added the possibility, during script OnIncrementRevisionState.LST execution, to get input parameter @IS_LINKED_DOCUMENT to check whether the script is running on the selected document or on a linked document.

Example:

value = DBWInput("@IS_LINKED_DOCUMENT").

Behavior Changes

- 20220209 – OffSite Mode: If the option Environment -> DBWAcServer -> [X] Enable ACL file locking is enables, it is now mandatory to activate the option Environment -> DBWArm -> [X] Enable DBWARM Access Rights Manager in order to start OffSite Mode. It is also mandatory to set up DBWARM users with the same name of Windows users. If the option Environment -> DBWArm -> Enable DBWARM Access Rights Manager -> [] Use DBWARM Login in not set, it will be automatically activate once OffSite Mode is started because it is necessary for a correct use of the product to know the personality that will operate on the physical files even if the PC is not in the company domain.

Bug Fixing

- Upload: Revision files were not correctly uploaded if the option User Options -> OffSite Mode -> [X] Use Asynchronous File Transfer was set
- 20220209 - Scripting: the ACCEPT_PARENT_APPROVAL_IF_CHILDREN_ARE_UNMANAGED and WORKFLOW_AVOID_SUBMITTER_APPROVAL_ON_FIRST_STATE options were not accessible using DBWShell GetOption/Option
- 20220208 - Download: Fixed a bug that caused component detached from any project to be recognized as fake and not to be downloaded.
- 20220203 - User Interface: when running standalone on a workstation where no CAD is installed, the Solidworks drawing icon was not properly shown in Trees and Grids.
- 20220203 - The Project User Assignment tool, if called from the shortcuts bar, would display the login dialog behind the browser
- 20220202 - ScanDir component: full support for native 64 bits scripts
- 20220201 - Registration Wizard: the wizard failed to check managed directories with regular expressions
- 20220127 - Replication Script: Replication scripts now correctly handle 64bit StandAlone usage

- 20220127 - DBSolidEdge: it is fixed a responsiveness problem after Saving As an empty assembly document.
- 20220127 - Dirty Revision Flag: DIRTY_REVISION_FLAG field was not reset on the configured brother at check-in
- 20220126 - ViewsManager: views would not be updated after changing the size of a field
- 20220125 - DBSolidEdge: it is fixed a problem of wrong material database information happening when saving document after material removal.
- 20220125 - Advanced Filter: the custom conditions would be filtered in cascade also when the joining operator is Or
- 20220125 - Web Client: filtering values in drop down lists are now in alphabetic order
- 20220120 - OffSite Mode: Fixed a bug that didn't let download checked-out files on OffSite Mode start if the option Environment -> DBWARM -> [X] Use DBWARM Full User Name was enabled
- 20220120 - Conversion Wizard: in case of StandAlone execution, the CAD system used for conversion is now read from the parameter file ConversionWizard.par
- 20220118 - DBInventor: fixed length property rounding assignment on save because of regional settings
- 20220116 - Revision:Recursive Operators : Fixed initialization of global variables *DBWorksBatchOperationDocumentsCounter* and *DBWorksCurrentDocumentBatchOperationIndex*, in case of detached Drawing Approval.
- 20220110 - Translated into French dialog related to reverting to a previous revision
- 20220103 - Assembly Duplication Wizard: using naming option "Name Options->Use custom script" in pair with DataEntr.lst overwrites Category Fields with empty values
- 20211223 - Edit/Revision Form: when executing an .SPT script for a specific field, the rule uppercase/lowercase defined in DBCustomizer was not applied
- 20211223 - Web Browser Pages: for some URLs some script error messages were shown, causing visualization issues. The fix contains also some registry keys to add to improve visualization (please check help topic *Web Browser*)
- 20211222 - Project User Assignment tool: the tool failed to start when a file DSN is in place and the user and password were not the same indicated in the DBWConn.PAR
- 20211221 - Remote Access: Unsharing Projects: Under certain conditions an unmanaged exception occurred when unsharing a project.
- 20211220 - Log File: With the options *DBWArm -> [X] Use DBWARM Full User Name* and *TRACE_CREATE_LOG_IN_USER_DIR = 1* in DbWapph.par, the log file wasn't saved in folder <USERS_DIR>\<DBWArm Full User Name>.
- 20211217 - Cut List: If the option Environment -> Cut List -> [X] Save Cut List ad Distinct Records -> Property-Filed association list was enabled and a property containing the degree symbol had to be saved in the database, an error was occurring. Fixed.

Service Pack 1.1 Build:20211217

Enhancements

- 20220112 - Support for the new Buy List option: All the Items except for NO_BOM
- 20211202 - New standard library command DBWSendEmailTLS: allows to send emails through servers that implement TLS protocol.

Syntax:

DBWSendEMailTLS SendTo, Subject, MailBody, HTML, SendFrom, DisplayMsg, AttachmentPath, SMTPServer, LoginUser, LoginPassword, port

Parameters:

<sendTo> a semicolon separated list of the email receivers
 <Subject> the subject for the email
 <MailBody> the body of the email
 <HTML> <0/1> if 1 sets the email format to HTML
 <SendFrom> the sender of the email
 <DisplayMsg> <0/1> if 1 shows a confirmation dialog before sending the email
 <AttachmentPath> the full file name of the file to be attached
 <SMTPServer> the smtp server
 <LoginUser> the login for the smtp server
 <LoginPassword> the password for the smtp server
 <port> the TLS server port number

Example:

```

...
SendTo="John Office <john@mycompany.com>; John Doe <john.doe@gmail.com>; Mary Shelley
<mary.shelley@mycompany.com>"
Subject="test e-mail Lib"
MailBody="this is a test message using TLS protocol"
SendFrom="Brian Hoff <brian.hoff@mycompany.com>"
DisplayMsg=TRUE
HTML=TRUE
AttachmentPath= "c:\temp\test_file.zip"
SMTPServer="mailserver.mydomain.com"
LoginUser="john@mydomain.com"
LoginPassword="myStrongPWD@"
Port="587"
DBWSendEmailTLS SendTo, Subject, MailBody, HTML, SendFrom, DisplayMsg, AttachmentPath,
SMTPServer, LoginUser, LoginPassword, Port

```

- 20211126 - DBWorks API: added function IsDetachedDrawing to object CADsystem to check if a drawing, passed as unique Id string argument, has been saved as detached or not (SolidWorks specific).

Usage Example:

```

...
Set pDBWInit = CreateObject("MwPDMApi.Initialize")
Set pDBWAppl = pDBWInit.StartConnection(DBWorksApplicationName)
IsDetached = pDBWAppl.CADSystem.IsDetachedDrawing(docUid)

```

And as DBWShell Command

```

call DBWShell("IsDetachedDrawing " & docUid )
IsDetached = DBWResult("@IS_DETACHED_DRAWING")

```

- 20211124 - Conversion Wizard: added new field “CONVERSION_RESULT” in DBW_CONVERSIONTASKTABLE for a better management of the result of the operation
- 20211122 - TreePage: Enhanced performance on command “Add Project to selection”
- 20211111 - In Admin Tools, the creation of a released database includes the copy of all the projects and of the documents in a released or obsolete state. The performance of the operation has been improved by more than a magnitude, allowing to setup the database in less than a minute in most cases
- 20211111 - In Excel BOM the field PARENT_CHILD_MAKE_BUY had been added to the main recordset in order to provide high performance access to this information with no overhead
- 20211111 - Web Client: the logging has been separated by process, grouped in folders by date and made it asynchronous with fewer accesses to the disk to lift stress from the server
- 20211111 - AutoCAD integration: added compatibility for AutoCAD 2022
- 20211111 – DBWTaskAgentNode: DBWTaskAgentNode.exe is now able to automatically run Standalone 32 bit ONLY if StandAlone 64 bit registry key is missing
- 20211029 - Remote Access: If the Download action is canceled by the script OnRemoteAccessAction.LST, the message “Error downloading FileName” is not shown anymore
- 20211029 - Remote Access: The evaluation if the download of a file is needed or not is based on the database field LAST_MODIFIED_DATE instead of LAST_MODIFIED_FILE_DATE. This ensure that every file that has the correspondent record modified will be downloaded.
- 20211028 -Task Manager: Task Manger Executer is now able to restart itself if the connection to the database broke. When connection brake it will automatically close itself and, as soon as the connection is resumed it will automatically restart. If the option User Options -> Act as Task Executer -> [X] Start play automatically is set it will also start executing the tasks from where it was interrupted.
- 20211020 - Inconsistencies tool executed automatically at the start of the Admin Tools Manager checks that the parameter file for tables definition includes the field UNIQUE_ID, although HIDDEN in most sections

Behavior Changes

- 20211019 - RMB->BOM->Edit BOM: in Assembly->Part relations, it was possible to assign quantities less than the actual number of physical instances. Notes: This is the completion of a fix dated 20180111 that made impossible to assign quantities less than the real number of physical instances only in the RMB->BOM->Change Quantity dialog. For addition info see RelNote 20180111 - RMB->BOM->Change Quantity.

Bug Fixing

- 20211214 - Conversion Wizard: option “Restore file system original last modified date” wasn’t properly working

- 20211213 - Assembly Duplication Wizard: with option “Register in DBWorks” active, if the selected project name contains spaces the Simulation will stop failing to check the project’s existence
- 20211207 - Check-out: It was impossible to recursive checking-out an opened document in state NEW
- 20211207 - Check-in: due to a regression introduced in R17 sp2.12, with the ‘*User Interface -> [] No input on checkin*’ and ‘*Revisions -> [X] Avoid database record editing even if checked-in*’, it is fixed a problem happens when check-in an opened document: such issue was causing a no action command showing wrong warning message and view mode input form
- 20211202 - OffSite Mode: with DBWACLServer enabled the Check-out action did not properly set ACLs on the files
- 20211202 - Assembly Duplication Wizard: with option “Register in DBWorks” active, if the project selected in the drop down menu (or loaded by a parameter file) does not exist in the Database the Simulation process fails with a warning for the user
- 20211202 - DBSolidEdge: under some circumstances, when trying to read/write the material the save operation failed with a crash
- 20211202 – SolidWorks Derived Configuration: Launching a save from a derived configuration was writing the derived configuration specific summary information even if the options Environment -> Configurations -> [X] Save only 1st level parent Configuration for any Part/Assembly was set.
- 20211201 - Revision output as PDF: converting from a specific Word document, the resulting document was missing pictures. Fixed by upgrading third party libraries (Aspose)
- 20211129 - Component Search Dialog: when using option “Use DBWorks for Searching SolidWorks Components” the dialog beside the search symbol was pre-filled with the component name
- 20211126 - Excel BOM Designer: clarified how to specify a filter condition in specific SQL
- 20211126 - Conversion Wizard: converting Solid Edge documents with option “Zoom to fit” involved also the drawings
- 20211125 – Remote Access: The download was automatically canceled if the downloaded component had a fake relationship in PARENT_CHILD table
- 20211122 - Workflow Designer: the properties form of a process would not allow to be saved implicitly while closing a form and the procedure would loop indefinitely
- 20211122 - Workflow Designer: error loading the users for a given action if the users had a null full user name
- 20211122 - Browser: when the workflow tab is active, under some circumstances, an unmanaged exception was fired during the repaint making the application no more usable
- 20211118 - Registration Wizard: after the Simulation process, the label “CAD files to be registered” wasn’t shown
- 20211118 - OffSite Mode: with DBWACLServer enabled, the uploaded local files did not have the correct ACLs set on them
- 20211118 - Admin tools: inconsistencies were displayed concerning the UI parameter files DBWUI.MSG that would not be fixed
- 20211118 - Conversion Wizard: file of size 0 KB were wrongly added to DBW_CONVERSIONTASKTABLE
- 20211117 - Conversion Wizard: when working with StandAlone with option “Number of files to convert for each CAD run”, the CONVERSION_START field of the processed document was filled before restarting the CAD
- 20211116 - DBInventor: with DBWACLServer active and option Environment -> [X] Use full user name (only on Windows domains) active without DBWARM, the Save was not completed, showing DBWACLServer error and producing wrong ACLs on the file.
- 20211112 - Scripting: under some circumstances, the "AddProjectToSelection" was not working correctly
- 20211111 - Advanced Filter: advanced TSQL conditions querying external tables were not compatible with customized UI field names
- 20211110 - Registration Wizard: the “Link” button used to specify association between file custom properties and field of the database was sometimes wrongly raising an error
- 20211108 - Advanced Filter: the state wouldn’t be reloaded
- 20211105 - Conversion Wizard: the “Execute Macro” area wasn’t properly working when launched from DBWorks
- 20211104 – Options: Under certain circumstances, the default value for the parameter CUT_LIST_LENGTH_TOLERANCE was saved using comma as decimal separator. That caused issue in the query involving this parameter.
- 20211103 - Search: fixed a bug that made the search function not work under some circumstances
- 20211103 - Material Manager Admin Tool: fields changing in case and the field rowguid would keep a record from being saved to the database
- 20211029 - Registration Wizard: button “Save CustProp_INSERT.txt” wasn’t properly working
- 20211028 - Browser: under some circumstance, a crash was happening when building Parent Tree
- 20211028 - Conversion Wizard: in “Select query” form renamed checkbox "Order files by size Ascending" to "Execute conversion by processing the files in order of increasing size". Also, when this option is active, the WORKSTATION name was not written in Conversion Task Table.
- 20211027 - Conversion Wizard: converting Inventor documents with option “Zoom to fit” involved also the drawings
- 20211026 - Task Agent: Handled exception de to broken database connection
- 20211026 - Task Manager: better handling of errors occurring during the execution of a script

- 20211020 - Solved hard crash in DBWERP, experienced only with DBWorks R20
- 20211019 - SolidWorks Freeze Bar: Recursive check-in and approve were causing errors in handling the SolidWorks Freeze Bar position.
Important: Only the first time a part is opened after a recursive check-in, is suggest to be opened in view-only mode to avoid the DBWorks warning message due to the setting of SolidWorks Freeze Bar position.
- 20211018 - Material Selector: support for multi folder for materials in SW2021
- 20211018 - Registration Wizard: the “Execute Macro” area, exclusive of DBWorks execution, wasn’t properly working

Service Pack 1.0 Build:20211015

Enhancements

- 20211007 – Task Director: the tool now creates an execution log under TMP folder named “DBWTaskDirector-Log-Date~~Time~~.log”
- 20210917 - Scripting: added optional parameter *taskApplication* to *TaskCreateScript* API; the default application type value is the application running the .vbs containing the commands for creating a script task. After issuing command TaskSubmit the working server name and application will be checked in the Execution Nodes table.

Syntax:

TaskCreateScript (scriptName taskWsName taskPriority [taskApplication])

Parameter

scriptName = full path name of the script

taskWsName = involved working server name

taskPriority = task execution priority [1:low, 2:normal, 3:high]

(optional) taskApplication = application type [1:DBWorks, 2:DBInventor, 3:DBSolidEdge, 4:DBStandAlone]

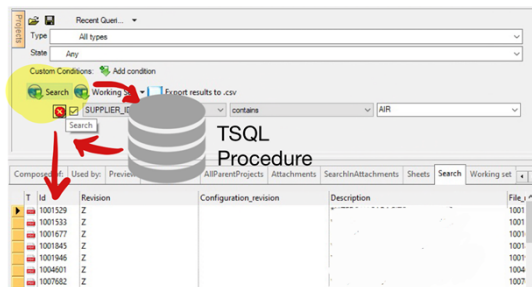
Example:

call DBWShell("TaskCreateScript C:\MechWorks_Pdm_Server\lst\Test.vbs DBWorksExecuter1 2 1")

(optional) call DBWShell("TaskAppend 241,242,245")

call DBWShell("TaskSubmit")

- 20210910 - Advanced Filter: ability to apply filters on special fields based on stored procedures in the database



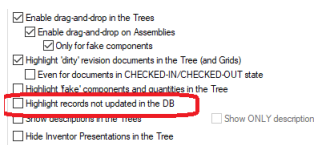
- 20210909 - UsedBy Grid: Added a new option to hide the projects in the UsedBy grid. User Interface -> Browser Behavior -> [X] Hide Projects in the UsedBy grid.
- 20210908 - Global Documents Filter: Added a new option to apply the Global Documents Filters only to the tree (no grids). User Interface -> Browser Behavior -> Global Documents Filter -> [X] Apply only to Tree.
- 20210906 - Database: Support for not updated record

Working with the option *Environment* -> [X] *Enable CTRL key for executing native CAD 'Save' or Save* -> [] *Always update database structure on checked-out document save*, it is now possible to keep track of not updated record at database level.

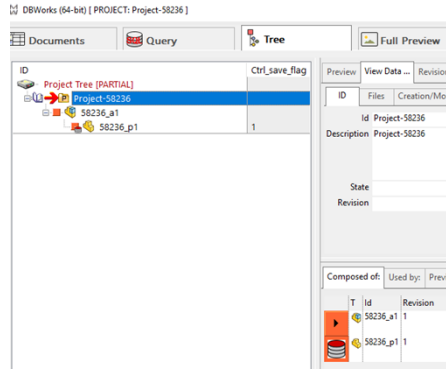
Based on the new field named CTRL_SAVE_FLAG (for all the supported languages) available in the DOCUMENT table (for legacy systems, it can be added via MwPDM Admin Tool -> Upgrade Database Version), the field keeps track of record with no updated information based on the last save operation performed: the value 1 indicates that only a CAD save operation was performed without updating the PDM database structure.

The value of this field is reset to NULL each time the database structure is updated for the specific record.

At browser level, the record with no updated DB information can be shown enabling the new option in *User Interface*-> *Tree* -> [] *Highlight records not updated in the DB*



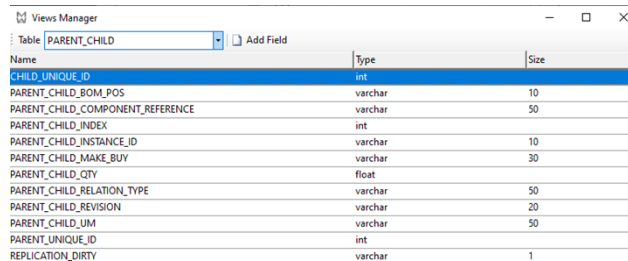
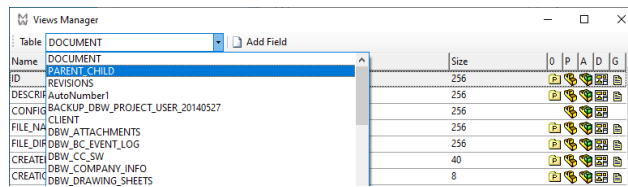
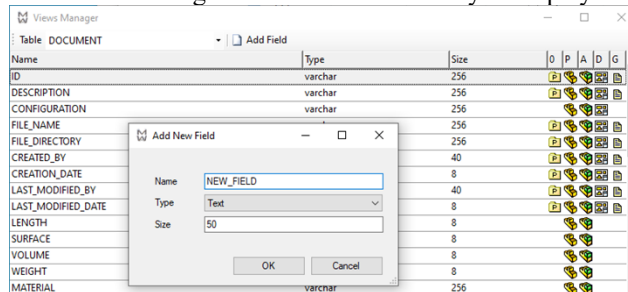
Once enabled, the involved records are shown in the Browser at tree/grid level:



and it is managed properly also in the “Existing drawings” column tree if selected.

At Event log, the following new events are now dumped: ASSEMBLY_SAVE_NO_DB_UPD, PART_SAVE_NO_DB_UPD, DRAWING_SAVE_NO_DB_UPD.

- 20210830 - Concurrent Engineering: While Local Mode of OffSite Mode are enabled it is not possible to reload file while they are opened in the CAD memory. That’s because the CAD itself locks the local files preventing the download and overwrite of the files. The Concurrent Engineering message shown has been changed suggesting the user to close and re-open the file in order to update the children. The RELOAD button has been disabled.
- 20210830 - Projects: new option *Options -> Projects -> [] Avoid adding current project to the existing projects selection* Working with partial project tree (SHOW_SELECTED_PROJECTS_DOCUMENTS_ONLY=1), if enabled, the new option will avoid to add the current project in the selection list automatically. The new option is suggested in case of tree performance issue: making a project as current, no changes to the project tree list is done when the option is activated.
 - 20210813 - Admin Tools: the views manager now embeds the ability to display and add fields to every table.



- 20210812 - Preview: file ALTPREVIEW.txt: it is now possible, for generic proprietary files to specify a tool that produces a bitmap for that file and let this bitmap being used as a preview. The rule to add is:

<proprietaryExt>

useCustomTool,<pathToCustomBmpConverter>

The tool must require one argument (the proprietary file) and create a .BMP file having the same name in the same folder of the original file:

<pathToCustomBmpConverter> <proprietaryFilePath>

Example:

- Suppose you have a .MXT file (C:\MyArchive\MyFile.MXT) registered as generic inside the PDM and a tool (C:\MyTools\MTX_BitmapConverter.exe) that is able to generate a .BMP file placed in C:\MyArchive\MyFile.BMP
- You then add the following rule on the ALTPREVIEW.txt file:

<MXT>

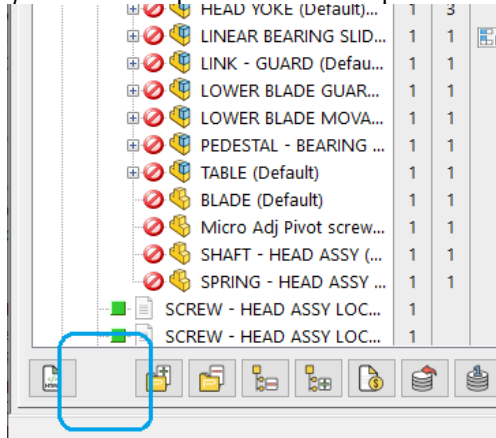
useCustomTool,C:\MyTools\MTX_BitmapConverter.exe

- Start the PDM and it will be possible to see the preview of the file
- 20210803 - OffSite Mode: Notably increased performance of DBWAsyncAgent in downloading files.

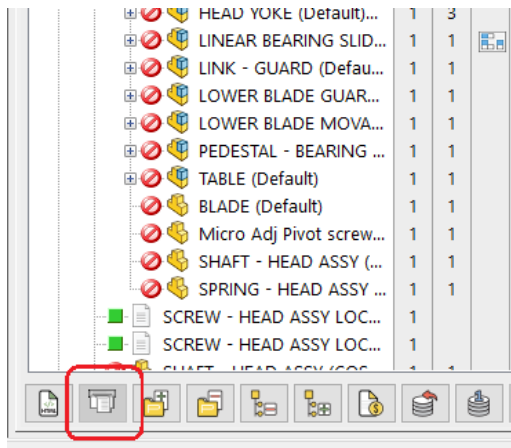
Behavior Changes

- 20210917 - UI: the buttons which previously were hidden due to DBWARM permission are now visible but grayed (disabled).

For example: when the “plot all document” permission is denied, the UI changes from:



To:



Bugs Fixing

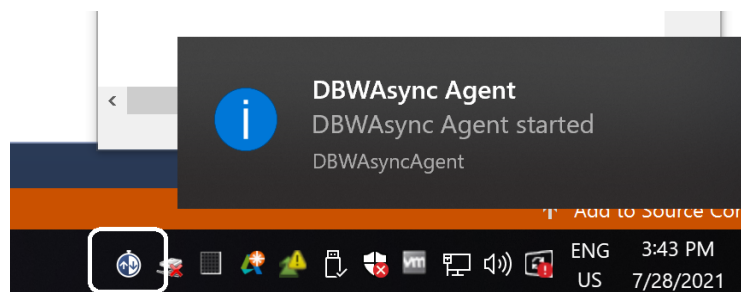
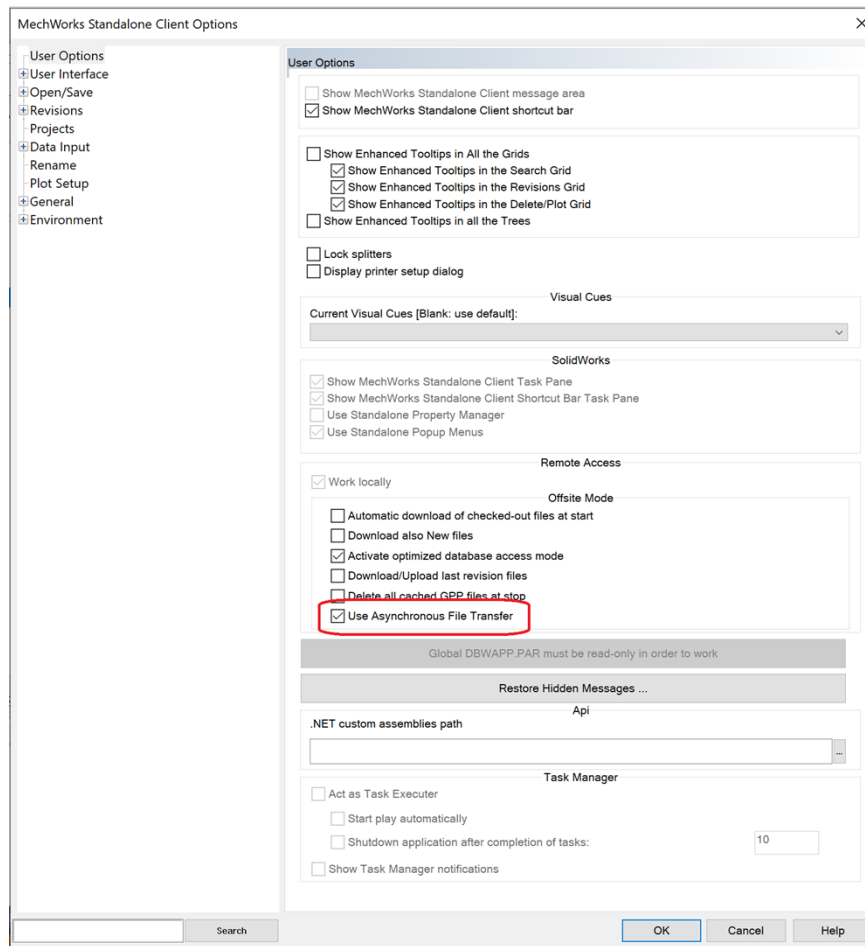
- 20211015 - dbwconn###.par: the following wizards now works with the parameter file crypted: Assembly Duplication Wizard, Cleanup Wizard, Drawing Creation Wizard, Conversion Wizard
- 20211013 - Registration Wizard: the “Fields mapping” area for property import was not disabled whit the PDM option "Data Input-> [] Import custom properties as field values using mapping file SCHEMA/CUSTPROP.TXT" not set
- 20211008 - DBDraftSight: Save/SaveAs method were not working with encrypted parameters file
- 20211007 - DataEntr.lst: previous fix “20210628 - DataEntr.lst: fix several issues in case of directory to be created during saveas” was not completed because under certain condition it was not possible to save document
- 20211006 - DBWShell(AddDocument...): with certain type of SolidEdge sub-assemblies it was not possible to import the Document Summary Info section of Properties using the SCHEMA\CustProp.txt and CustProp_Insert.txt technique

- 20211005 - TaskAgent: Handled exceptions on Crypting/Decrypting the file where DBWARM login is stored.
- 20210929 - BriefCase: CAD files with HIDDEN attribute set were not zipped into the Briefcase folder
- 20210928 - DBAutoCAD: the native CAD Save (or Close and Save) operation could overwrite a document locked out by another user
- 20210928 - Category Maker: the description of a code could be left empty causing an error at runtime
- 20210924 - .NET Wizards: improved usability in Assembly Duplication Wizard and Registration Wizard for loading the parameter file
- 20210924 - Registration Wizard: it is now correctly handled (if present) the PDM option “Use only mapping file SCHEMA\CUSTPROP_INSERT.TXT for new Documents”
- 20210924 - Company Manager: the Company Manager would fail to delete a company if it had no orphan records
- 20210923 - Material Editor: the form would not remember its location and size across sessions
- 20210923 - Material Editor: SQL error adding a material if the density had not been set
- 20210923 - DBWList function: the object returned true if the user closed the form using the top right cross in the window
- 20210921 - Task Director: added “Close” button to the main Form
- 20210921 - Add BOM to drawing: the procedure would fail if the field DBW_PREVIEW_IMAGE is in the DOCUMENT table
- 20210917 - Category Maker: In the form for a new category clicking on the dropdown list would disable the OK button
- 20210917 - Excel BOM: The filter on suppressed components would filter out also valid records
- 20210917 - Excel BOM designer: the strings reported a filter on hidden components while it was on suppressed components
- 20210916 - Material Selector: the selector was not compatible with multi-folder database location introduced in SW 2021
- 20210916 - Task Director: The Processing Working Server Name field now shows the alias of the machine (VISIBLE_NAME) if present
- 20210915 - DBSolidEdge: Fixed crash caused by repainting of browser if a determined composition of grids were selected
- 20210915 - Task Director: Improved usability and added German translation
- 20210914 - Task Manager: Excluded virtual components from the check if the option Environment -> Task Manager -> [X] Check for missing references before queuing tasks is enabled
- 20210914 - Scripting: dbwscript.in file generated right before the execution of the script OnRevisionOutputFilesCreated.LST contained wrong informations.
- 20210914 - DBWorksLogAnalyzer: the tool would crash in case of missing timing data for functions
- 20210913 - Admin Tools: the display of field belonging to views in the management of Data Form was not case insensitive, so lower case fields appeared to not belong to any view
- 20210909 - Registration Wizard: option “Force Re-register” wasn’t properly working
- 20210909 - Registration Wizard: fixed a problem happening when working with PDM option “Only store/Do not store records for documents within the following directories”
- 20210908 - Registration Wizard: the option from loading the list of documents from file was failing during Simulation
- 20210908 - Registration Wizard: it is fixed an error occurring when setting option “Create Projects from Dir structure”
- 20210903 - Task Manager: when enqueueing task related to generic documents, it is fixed a problem of no available working server
- 20210902 - Link Mode: in option [X]Align Drawings<=>Part fields removed some ADW reserved fields from the Data Input form of DOCUMENT table (ADW_TIME_STAMP, COPIED_FROM_ID, COPIED_FROM_UNIQUE_ID)
- 20210901 - Save Wizard: for SolidEdge files Category Maker allows to assign icons that are specific to the preview of a file. When you assign the icon in Category Maker the file must be registered in the database and either StandAlone or SolidEdge must be up and running
- 20210901 - Conversion Wizard: the Execute Macro (available only for SolidWorks files) is now greyed out when working with Inventor/SolidEdge
- 20210831 - Excel BOM: the number of drawings in a given assembly was limited to 255
- 20210830 - Assembly Duplication Wizard: solved a crash involving the “Duplicate As Built” operation
- 20210826 - DBDraftSight : the Save operation of a new file wasn’t properly handling the automatic checkin/checkout of the document
- 20210823 - Options: User Interface -> Tree page, the layout of column tree section has been rearranged to improve usability
- 20210817 - Task Manager Administrator: it was possible to set the same VISIBLE_NAME for two different machines in the DBW_TASK_EXEC_NODES table
- 20210811 - Standalone: with the option User Interface -> Browser behavior -> [X] Show Browser as CAD window set, the standalone browser was opening maximized even if previous setting was not.

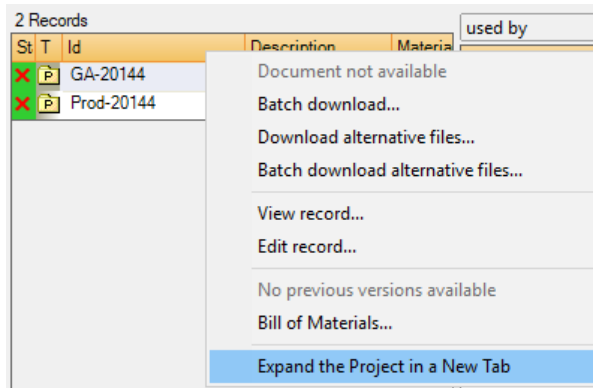
Service Pack: 0.5 Build: 20210730

Enhancements

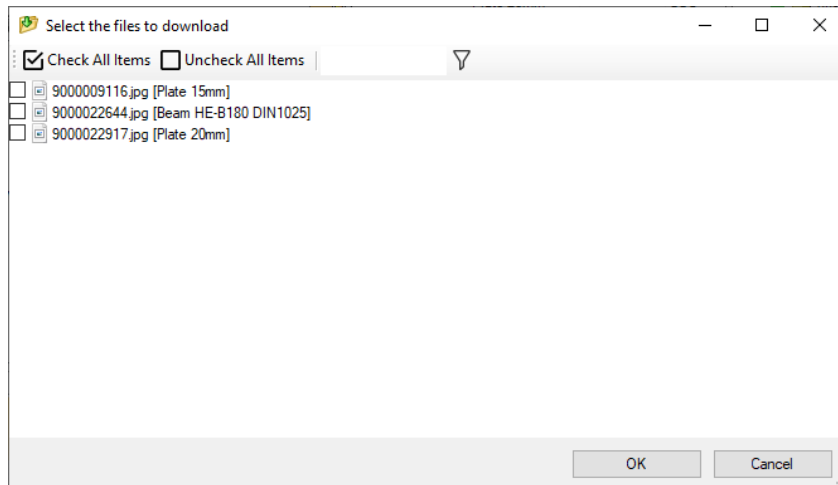
- 20210728 – OffSite Mode: New option added: User Options -> OffSiteMode -> [X] Use Asynchronous File Transfer. If enabled, when clicking Right mouse button on a tree element -> OffSite Mode -> “Download the Remote Component and all the children”, selecting the desired file to download and clicking ‘OK’, the download operation will be parallelized. The core will automatically start a new executable called DBWAsyncAgent that will be in charge of physically copy the files from the server to your local folder while the core is computing the necessary data to be downloaded. The parallelization enabled by DBWAsyncAgent will speed the download up by up the 100% of the previous elapsed time. When the transfer is completed, a popup will inform the user of the event and will be possible to access the downloaded components. After 5 minutes of inactivity DBWAsyncAgent will autonomously end.



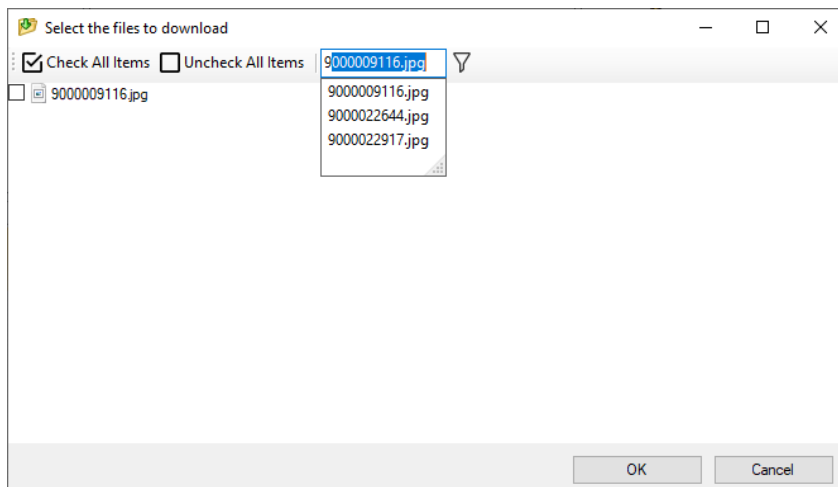
- 20210709 - Web Client: added a command in the popup menu from grid and trees to expand the project in a new tab inside the Projects Tree view



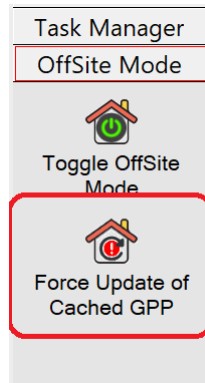
- 20210709 - Web Client: added description info to the items in the dialog for batch download of alternative files



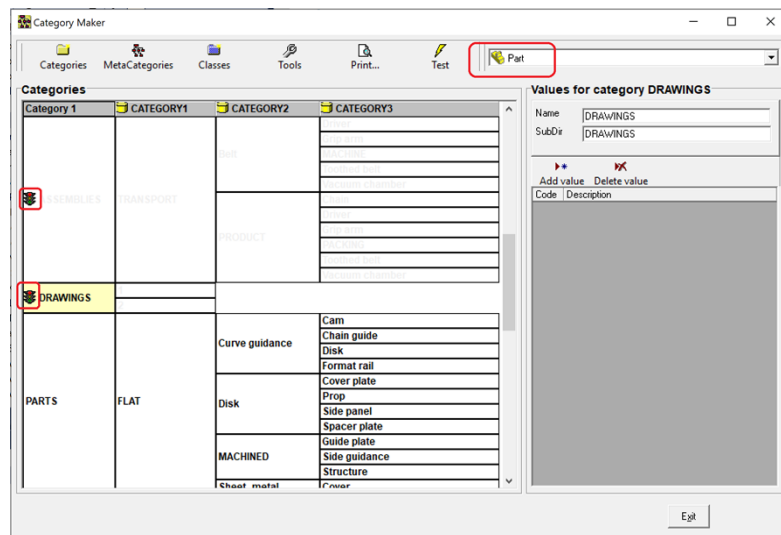
- 20210705 - Web Client: added real-time filter to the dialog for batch download of alternative files, display entries in alphabetical order



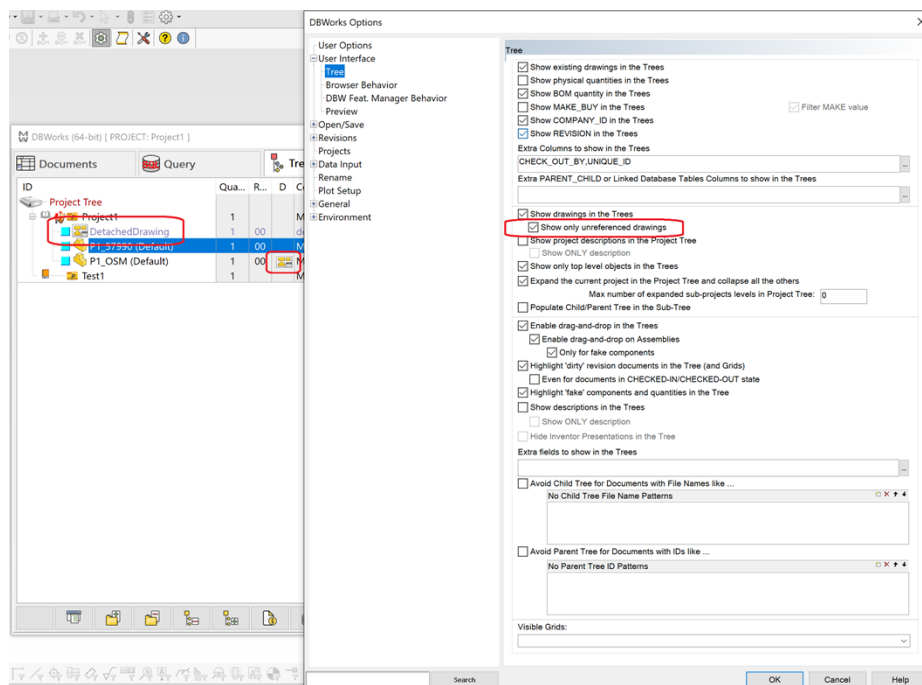
- 20210629 – OffSite Mode: Added a new button in the shortcut bar under the OffSite Mode section: “Force Update of Cached GPP”. If pressed it will send a message to every other user and the next time they will start the application, if OffSite Mode is enabled, the cached GPP will automatically be updated.
This button will be visible ONLY for administrator users.
IMPORTANT: The automatic update will take place at the next reboot



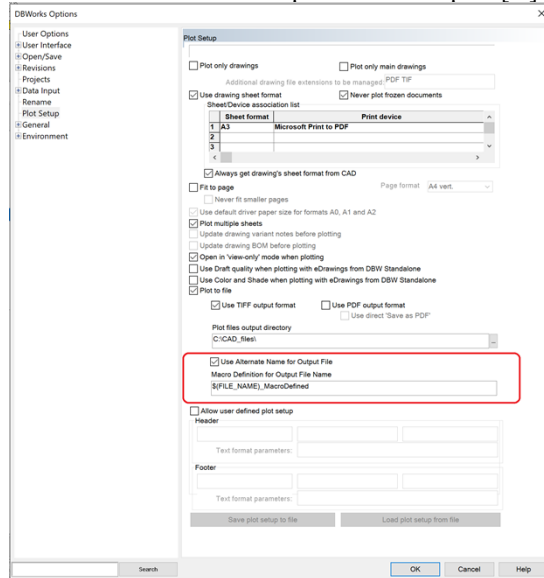
- 20210628 – Save Wizard: Save wizard has been enhanced in order to support the naming of unreferenced drawings. A new default category named “DRAWINGS” has been added.
IMPORTANT: In order to properly use Save Wizard to save the unreferenced drawing you must create a new category and all the desired sub categories via Category Maker tool and be sure that the new category is hidden for parts and assemblies.



- 20210623 - Options: Added the sub-option User Interface -> [X] Show drawings in the Trees -> [X] Show only unreferenced drawings that let you visualize in the trees all and only the drawings with no referenced 3D model. Particularly useful if the CAD is used for 2D drafting.



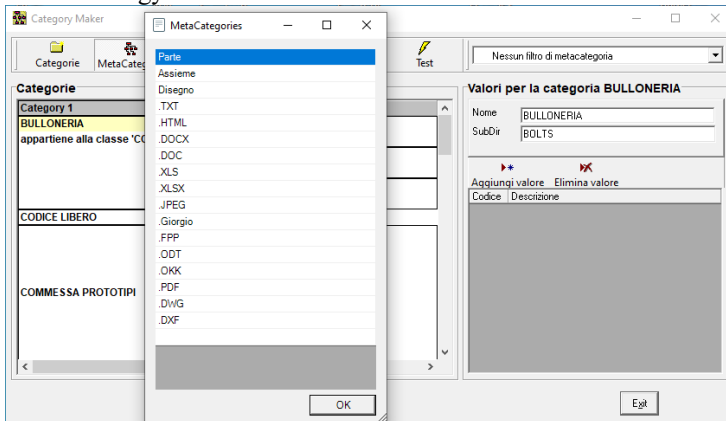
- 20210617 - DBWorks plot options: Added the option Plot Setup -> [X] Use Alternate Name for Output File that let you chose the name of output file via macro definition if the option Plot Setup -> [X] Plot to File is checked.



- 20210615 - OffSite Mode: Starting OffSite Mode won't show the NET USE confirmation DOS prompt anymore in any situation
- 20210611 - DBWARM: Added new DBWARM group right View Data -> [X] Temporary disable Global Docs Filters, if checked pressing the SHIFT button won't disable the Global Documents Filter defined by the option User Interface -> Browser Behavior -> Global Documents Filter (SQL format)
- 20210608 - Scripting: When reading values from dbwscript.out the PDM interprets the character '^' as carriage return. It is now possible to use the escape character '\\' before the character '^' to avoid interpretation.
Example: "line1^line 2" will result in "line1" on the first line and "line2" on the second
"line1\\^line2" will result in the string "line1^line2" all on the same line
- 20210601 - OffSite Mode: When starting OffSite Mode the Tree will be completely collapsed in order to optimize starting time in remote environment

Behavior Changes

- 20210716 - The form for managing MetaCategories in Category Maker has been redesigned as part of the porting of an old technology



- 20210713 - The notifications on custom fields in the Excel BOM that do not affect the feature are now logged instead of displayed on screen
- 20210705 - Make control of the field CONFIGURATION_STATE in Tables2.dfl dependent on the activation of the related option
- 20210608 - Conversion Wizard: restored default behavior for option "[x] Convert drawing while the model is open" : with this option enabled, the wizard will open one of the drawing related to the processed assembly/part. Also, it is added a sub-option "[x] Just the drawing with the same ID" : enabling this option will open only the drawing with the same ID - if exist - of the processed assembly/part

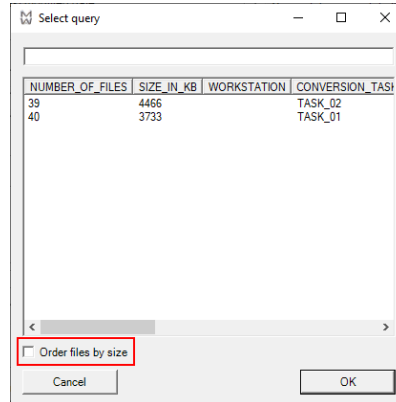
Bugs fixing

- 20210730 - Scripting: MwPDM API: better handling of error messages during initialization
- 20210729 - Setup: due to a package mistake, the setup was not able to install .net 2.0 framework when was verified as missing, causing several tools not working.
- 20210726 - Tables2.dfl - The field DESCRIPTION was not shown in Dialog even if present in sections COMPOSED_OF and EDIT_BOM
- 20210726 - DBAutoCAD: correct handling of some message files
- 20210719 - Scripting OnSearchBOMItem.LST : when creating an *entry for the BOM* of type PART in DBSolidEdge, the selected part was not accepted as a correct value
- 20210715 - Material Wizard: support for DBWMAT database separated from the main one
- 20210715 - Material Wizard: allow editing of custom fields
- 20210713 - Material Selector: double click on a line is equivalent to OK
- 20210713 - Material Selector: returns to Data Form also custom field values
- 20210713 - Advanced Filter: the queries saved would not include the list of projects selected by the user
- 20210707 - Performance: Save: to improve performance, the complete list of related projects is now computed only when using DataForm interactively
- 20210706 - Registration Wizard: the Wizard failed to register generic files
- 20210705 - Dataentr2.txt: it is fixed a display problem happening when using linked table tab
- 20210702 - Full Preview: added the .ppt and .pptx file types implementation
- 20210702 - Workflow Designer: error updating the rights for a single user
- 20210628 - DataEntr.lst: fix several issues in case of directory to be created during saveas
- 20210628 - Assembly Duplication Wizard: during the simulation of a Rename operation the Drawings were not previewed in the Components Grid
- 20210625 - DBDraftSight: removed some MessageBox caused by internal operations that were interrupting the SaveAs command in certain conditions
- 20210624 - DBWorks: in specific customer environments, an unmanaged exception was fired during the startup causing application instability
- 20210624 - OffSite Mode: Undo Check-out did not work properly if OffSite Mode was enabled and the file was manually uploaded before the command
- 20210624 - Full Preview: added the .mi and .me file types implementation
- 20210623 - PDM: the sub-option *"User Interface->[x]No dependents input when saving->[]Allow input only when traversing new parts"* was wrongly managed in certain conditions
- 20210623 - DBWorks/DBInventor: implemented the fix made for DBSolidEdge: "20210618 - DBSolidEdge: with options *Always use DBSolidEdge 'Save' and 'Save As'* and *Automatic CheckIn/Out* active, after inserting a new part in an existing assembly and saving with the CAD button the new record stayed in state NEW" and "20210618 - DBSolidEdge: with option *Automatic CheckIn/Out* active, after inserting and saving a new part in an existing assembly the tab within SolidEdge showed the component in state NEW while the record is CHECKED_IN/OUT"
- 20210618 - Task Manager: working with the option *Options->Environment->Task Manager-> [X] Show Task Manager notifications* it is fixed a problem causing no message notification when a task was completed
- 20210618 - DBSolidEdge: with options *Always use DBSolidEdge 'Save' and 'Save As'* and *Automatic CheckIn/Out* active, after inserting a new part in an existing assembly and saving with the CAD button the new record stayed in state NEW
- 20210618 - DBSolidEdge: with option *Automatic CheckIn/Out* active, after inserting and saving a new part in an existing assembly the tab within SolidEdge showed the component in state NEW while the record is CHECKED_IN/OUT
- 20210616 - DBInventor: FeatureManager, under some circumstances, an unmanaged exception was fired when activating document causing a freeze of the application
- 20210615 - MW PDM: enhanced security with implementation of TLS 1.2 protocol when using WEB services
- 20210611 - Web Client: update of the markup client to work with eDrawings 2021
- 20210609 - DBWorks: Save: working with configuration, under certain condition, the computed field value associated to sketch/dimension/equation was not properly managed
- 20210608 - Workflow: improved usability about showing users that can take actions on the assigned state command
- 20210603 - DataEntr.lib: it is now possible to manage FILE_DIRECTORY values containing an apostrophe character
- 20210601 - OffSite Mode: Folder LST\AnyType was not cached
- 20210601 - DBSolidEdge, DBInventor: Variant Note macro \$SECONDARY() was not managed properly for the Unicode Secondary Language support
- 20210601 - Visual Cues: Visual Cues based on query on PARENT_CHILD table were not handled correctly if a document had an instance in multiple assemblies
- 20210531 - Save Wizard, DataEntr.lib: class descriptions would not be made available to the main script
- 20210528 - Visual Cues Manager would allow to add a condition on tables not supported by the core
- 20210528 - Web Client Setup: the location of the web pages was not being saved to the registry

Service Pack: 0.4 Build: 20210527

Enhancements

- 20210519 – API .Net: TaskManager added to object model. It is possible to call TaskManager.TaskCreate, TaskManager.TaskAppend and TaskManager.TaskSubmit. TaskManager is member of MwPDMApi.Application.
- 20210517 - DBWShell TaskCreate: added optional boolean parameter *processRelatedDocuments*. If the parameter is set to 0 only specified document is processed and related children are not considered. Default value is 1.
- 20210513 - Admin Tools: the check for inconsistencies now includes also the parameter files for localization of custom fields
- 20210506 – Web Client: redesign of the login page to access the options
- 20210507 – Conversion Wizard: it is possible to sort on file size files to be converted loaded from WS table



- 20210506 – Project assignment: On document save user is allowed to change assigned project evaluated according to option *Projects->Assign project by component prefix or directory*
- 20210427 – DBWShell: Added GLOBAL_DOCUMENTS_FILTER and GLOBAL_DOCUMENTS_FILTER_APPLY_ONLY_TO_GRIDS to the list of options available for reading and writing using DBWSetOption/DBWGetOption
- 20210413 - Project User Assignment tool: if the description of any project contains an invalid character (i.e. ASCII values < 10) a clear error is reported indicating the records that should be fixed
- 20210413 - Record Already Registered Message: A checkbox has been added for not showing the warning message again when saving a component if a record with the same file name but different directory exists in the database
- 20210413 - Web Client: the options manager has been made available from the about dialog of the client (requires and additional login as DBWorks Admin member)
- 20210409 - Web Client: download directly the components for the SolidWorks Document Manager from the server. The feature is available from the about box of the client
- 20210406 - Remote Access: Improved management of fake components during download operations
- 20210331 - DBSolidEdge: Enable replace assemblies with individual parts and vice versa

Behavior Changes

- 20210524 – Registration Wizard: the new .NET version of the wizard is now the default tool when registering documents in the database.

Registration Wizard

Input selection

Input: Z:\FILES\REGWIZ

☒ Scan directory ☐ Load list from file

☒ Recursive

File Filter:

Project

☒ Select existing Project: newDotNET

☐ Create Projects from Dir structure: 1 2

☐ Just create Projects structure

File type

☐ Register SolidWorks Files ☒ Parts ☒ Assemblies ☒ Drawings

☐ Register Inventor Files

☐ Register SolidEdge Files

☐ Register Generic Files

☐ Execute Macro: Macro file: Module: Function:

Fields mapping

Database Fields: FAMILIA, ID, ITEM_CODE, LAST_CHECK_IN_BY, LAST_CHECK_IN_DATE, LAST_MODIFIED_FILE_DA, LENGTH, MAKE_BUY, MATERIAL

Custom Property: Material

Check

☐ Force Re-register ☐ Only if checked-out from same user

☐ Check Duplicates ☐ Check References ☒ Check Configurations

ID	FILE_DIRECTORY	FILE_NAME
reg10_inv	Z:\FILES\REGWIZ\	reg10_inv.ipt
reg11_inv	Z:\FILES\REGWIZ\	reg11_inv.ipt
reg12asm_inv	Z:\FILES\REGWIZ\	reg12asm_inv.iam

Task Completed...

- 20210521 - DBCustomizer does not add automatically a section for PARENT_CHILD data into Tables2.dfl as this would expose standard fields to editability
- 20210520 - Conversion Wizard: the option "[x] Convert drawing while the model is open" with a model that has more than one drawing now process the drawing with the same ID
- 20210426 - Options: Remote Access Mod can now be enabled only if DBWARM is enabled.
- 20210415 - Browser: any error in the Task grid of the TreePage is now shown as popup message instead of a text message in the browser bottom bar.
- 20210407 - Data Input Form: in brand new installation only the value "BOM" for the MAKE_BUY field is not provided anymore.

Bugs fixing

- 20210527 - DBWSelectDir: if invoked inside a script running 64 bits from SolidWorks or Stand Alone the script would freeze the process without displaying the dialog to select a directory
- 20210525 - DBSolidEdge: Under certain conditions, standard part files (from a remote location) were wrongly saved in the PDM
- 20210521 - Web Client: avoided error in preview panel on first connection with https server
- 20210521 - Preview: with Local Checkout Mode enabled it was not possible to see preview of previous revisions
- 20210521 - Category Maker: it was not possible to delete an existing code
- 20210521 - Category Maker: the warning at open time showing that the directory chosen in the options was incompatible with the DBWorks settings could be a false positive alert
- 20210521 - Conversion Wizard: it is now handled a crash during the "Load query from WS table" operation when the table DBW_CONVERSIONTASKTABLE is missing from DataBase
- 20210520 - Remote Access: it wasn't possible to drag&drop a sub-project into the tree root if Remote Access was enabled
- 20210520 - Admin Tools: when linking the values of a field to an external data source, the ability to select the data source and the selection of the column that would set the value of the field were ineffective
- 20210518 - OffSite Mode: Fixed a bug that caused the button "Refresh OffSite Local Cache" of the OffSite Cache Manager Tool to delete the local cached folders but not restore them properly.
- 20210517 - PDM: in some circumstances the startup of the application was not completed successfully, leading to unpredictable behavior such as missing preview or toolbar not working. In such cases our log file was also missing the options list and was not properly indented.
- 20210513 - Remote Access Local Copies: highlight of out-of-date documents: using remote access local mode, the out-of-date foreign document were not highlighted as they should have been
- 20210513 - Admin Tools: the tool to manage the localization of custom fields would not save the parameter files correctly
- 20210512 - Options: Some search result entries were missing under certain circumstances.

- 20210512 - DBDraftSight: the Save operation of a new file caused the toolbar to freeze
- 20210512 – Replication Scripts: Fixed a bug that caused the impossibility of firing replication script via Task Scheduler
- 20210511 – Admin Tools: the deletion of an unprotected field would not be possible from the Views Manager
- 20210507 – DBSolidEdge: Document page splitter failed to load/store position because of regional settings under certain conditions
- 20210507 – Conversion Wizard: avoid processing the same file multiple times when there are distinct records for each configuration of same document.
- 20210505 – DBSolidEdge: fixed wrong sub assembly mass value on assembly save under certain circumstances.
- 20210505 - DBDraftSight: the Save command was not working for new files, avoiding the document save on filesystem
- 20210504 - Assembly Duplication Wizard: fixed a wrong behavior occurring when duplicating a document with an existing and registered filename: the user is now warned and the simulation stops with an error message
- 20210504 - Save: saving an assembly containing children already registered in db but from different directories didn't rise a warning if the current configuration of the child was not allowed by the option *Environment -> Configuration -> [X] Save configurations only of component with names..* or the option *Environment -> Configuration -> [X] Save configurations only of component with configuration names..*
- 20210503 - Full Preview: specifying the “Full Preview” entry in the file dbwiedef.txt, to choose the tab order, was causing a crash.
- 20210503 – Browser: fixed crash on startup when revisions tab was last selected.
- 20210430 – Scripting: using Database.WhereUsed, the function based on specific DocType may raise an exception under certain conditions. In addition, the new method Database.WhereUsedByString is now provided to extend filter definition (like "'0','P'")
- 20210429 - Assembly Duplication Wizard: fixed a crash when working with DBSolidEdge and virtual entries
- 20210429 - Admin Tools: the DATAENTR.LST files that manage the fields in the DATA FORM for linked tables were displayed as containing inconsistencies also if they were valid
- 20210429 – Options: check field and value if *Environment->Cut List->Set a database field with a specific value* is checked
- 20210429 – Browser: fixed crash on startup because of tabs initialization under certain circumstances
- 20210429 - Admin Tools: fields belonging to the PARENT_CHILD table if added to the table EDIT_BOM would be reported as inconsistencies
- 20210428 – DBSolidEdge: fixed query failure on assembly approve related to part-drawing field value alignment due to regional settings
- 20210427 – Conversion wizard: improved progress bar messages and progress counter.
- 20210426 – Conversion wizard: selected macro were not executed for drawings if converted using option “while model is open”
- 20210423 – Options: avoid fields listed in *Environment->Configuration->Field to be aligned among configurations* check if *Environment->Configuration->Always Align Configuration Fields* is not flagged
- 20210422 – DBWorks.msg file: if the option *General -> [X] Use Database User Interface Localization* was NOT flagged the DBWorks.msg file was loaded from installation folder root instead of the installation language folder
- 20210422 - Assembly Duplication Wizard: the file "MwADWRevisionsToShow.par" containing the Revision values for option *Options -> [X] Default Revision Assignment* is now distributed as a template
- 20210421 - Excel BOM: the BOM could not be generated from a simple vbs external script
- 20210421 - DBWorks: Save: in specific customer environments, an unmanaged exception was fired during save command execution disabling several PDM commands
- 20210420 - Assembly Duplication Wizard: during duplication the values of the field "New DESCRIPTION" in Grid were overwritten by the ones generated with custom script
- 20210420 - DBSolidEdge: Under certain circumstances DBSolidEdge would have freezed during save of very large assemblies. Added protecting code
- 20210420 - DBSolidEdge: avoid SolidEdge message when creating output files on check-in
- 20210416 - DBSolidEdge: part Check-in keeping assembly opened changed file property Density in the assembly for the part and could result in part material Density wrong update if reopened.
- 20210415 - DBSolidEdge: fixed file property density wrong update on save because of regional settings
- 20210409 - Browser: working set tab was not filled on startup
- 20210408 - MWScriptGUI, serving many tools: the messages for the localized interface were reported as missing also if they were stored in the correct position
- 20210407 - Automatic check-out: under certain circumstances a new part added to an already registered assembly where not checked out on save despite of Automatic check-out option.
- 20210406 - Web Client: the client is now compatible with SwDocumentMgr client side in order to obtain local previews and references between models. The SolidWorks Document Manager still needs to be installed separately.
- 20210402 - Workflow: after a new installation of the PDM on a new machine, or after an update of a native R20 installation, the Workflow main tab of the Browser was not showing the graphic control because of a missing file

- 20210401 - Admin Tools: the Views Manager would not start from the Admin Tools and DBCustomizer would start instead
- 20210401 - Admin Tools: the Views Manager was not compliant with FileDSN connection strings
- 20210401 - Admin Tools: the Views Manager would not allow to remove a field from the DOCUMENT table
- 20210401 - Conversion Wizard: the Wizard wasn't starting without MechWorks PDM StandAlone installed
- 20210401 - DBSolidEdge: fixed weight field issue in Edit/Revisions dialog related to regional settings
- 20210331 - Scripting: avoid fire OnCommand with approve id on recursive checkout of released element
- 20210330 - SW utilities: SolidWorks utility api is no longer able to save volume comparison result. Compare models in Revision now doesn't fail because of save failure in order to help user in performing volume comparison in cad
- 20210330 - DBWorks Drawing BOM: under certain conditions, the cut-list items ballooning was not working properly
- 20210330 - Workflow: the Workflow main tab of the Browser was not showing the graphic control
- 20210326 - Web Client: modifications to the setup to allow custom location of files for web pages and parameter files
- 20210325 - Scripting: Under certain circumstances DataEntr.lst exported fields values where not used on SaveAs for drawings
- 20210323 - OffSite Mode: It was impossible to download a file checked out and downloaded by another user using OffSite Mode
- 20210323 - Workflow panel: the arrows were not always displaying for a change of state
- 20210323 - Excel BOM: an annoying and unsubstantial message would stop many times the creation of a BOM with previews
- 20210322 - Material Wizard: crash if you selected the same field twice in the hierarchical fields
- 20210322 - Scripting: the script available for Drawings on RMB→Save As→DXF produced an incomplete DXF if the document was in released state

Service Pack: 0.3 Build: 20210319

Enhancements

- 20210317 - Web Client: improved visibility of check buttons in the dialog for Batch download of files
- 20210316 - SolidWorks HotKeys: Added the following DBWorks commands to the list to be added as keyboard shortcuts in SolidWorks: Create new revision, approve, uncheckin, uncheckout, rename, open in view-only
- 20210312 - Scripting: Added OnIncrementRevisionState.lst script. User can avoid revision increment on a given element through the script returning @OKINCREMENT=""
In Revision options added OnIncrementRevisionState.lst checkbox to activate/deactivate script execution
OnIncrementRevisionState class added to MwPDMApi Namespace
- 20210311 - Workflow: added optional @OKSHOWWORKFLOWMENU output to OnCheckForRequiredECR.lst to allow user to enable/disable workflow menu when @OKREQUIREDECR=0
- 20210309 - Drawing Creation Wizard: added a new hidden parameter (GLOBALSKIPONADDDOCUMENTLST) on the DrwWizard.par to skip the OnAddDocument.lst call when adding the created drawing on the PDM. The parameter must be set to 1 in order to avoid the callback.
- 20210309 - Revisions: It is now checked that the next revision's name does not start with '.' Because this would create issues with revision files.

Behavior Changes

- 20210317 - DWG=>PDF: the older versions of the tool DBWDwg2Pdf.exe have been removed from their binary folder. In case of need, they can easily be obtained from Mechworks support.
- 20210311 - Web Client: the form to clean up the download folder displays also the files not registered in the database
- 20210311 - Admin Tools: in the inconsistencies form, expand the root node of the tree automatically to display the type of inconsistencies found

Bugs fixing

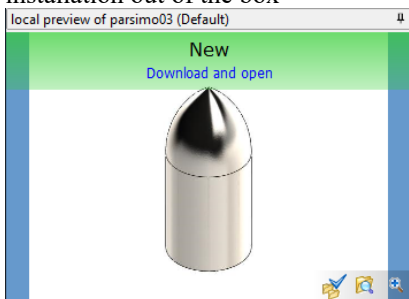
- 20210319 -OffSite Mode: If downloading a component checked out by another user it would have had the company_id erroneously changed in "current_user@company_id"
- 20210319 -The Web Client: the expansion of an existing item would not be reported correctly in the tree and would appear as if many entries were missing
- 20210319 -The Material Wizard would crash when in the drop down list used to select the hierarchical fields a user wrote a casual string and clicked add
- 20210319 -The Material Wizard would crash on an xml export
- 20210318 – Admin Tools: in brand new installations only, fixed an inconsistency detected about CONFIGURATION field in the GENERIC section of SCHEMA\TABLES2.DFL file

- 20210317 - The Material Selector could not output its values to DBWorks when the option to use the SolidWorks materials was active
- 20210317 - The Material Wizard would crash if you added a field to the DBWorks output while no query was active in the grid
- 20210317 - DBWGrid x64 in the external Advanced Filter: visual cues had not been implemented
- 20210317 - DWG=>PDF conversions: fixed pdf page order for dwg files with more than 9 layouts
- 20210316 - Excel BOM: would try to start Stand Alone from SolidWorks 2021
- 20210315 - Excel BOM: solved a compatibility problem with fileDSN
- 20210312 - Master Drawing: "Open Master Drawing" menu item was not shown in right mouse button menu on the drawing itself
- 20210312 - Web Client: if the search box above was emptied then the previous filter would still apply in queries from the projects tree pane
- 20210312 - Web Client: the icon in the Task Bar would not display the same icon as the application
- 20210312 - Open File: SolidWorks drawings always opened in detailing mode under certain circumstances
- 20210312 - Assembly Duplication Wizard: the fix *"20210309 - Assembly Duplication Wizard: the wizard now handles correctly multiple SolidWorks versions installed on the same machine"* introduced a regression, involving the start up with SolidEdge and Inventor
- 20210311 - OffSite Mode: "Edit document record" and "Edit revision record" commands weren't working properly if OffSite Mode was enabled
- 20210311 - Admin Tools: the Project user assignment tool wouldn't start on a FileDSN connection
- 20210311 - DBSolidEdge: previous fix *"20210304 - DBSolidEdge: using the "User Interface->Tree-> [X] Populate Child/Parent Tree in the Sub-Tree" option, a crash was happening when selecting items at Browser level under some circumstances"* was not completed because the crash was still happening in some circumstances
- 20210310 - Scripting: fixed crash in DBWRadioCombo
- 20210310 - Scripting: In brand new installations, the shortcut bar button "Visual Cues Select" was displaying a "File does not exist" error.
- 20210310 - Excel BOM: the preview of the main assembly in the header would not display
- 20210310 - Excel BOM: it was not possible to create the BOM of a previous revision
- 20210309 - Open Wizard: a triangle for the current record was misplaced and has been removed
- 20210309 - Open Wizard: the icon for SolidWorks files were missing
- 20210309 - Assembly Duplication Wizard: the wizard now handles correctly multiple SolidWorks versions installed on the same machine
- 20210309 - Open Wizard: IDW files were not being previewed
- 20210309 - Workflow: allow user to follow workflow path for increment revision also if ECR is not required according to OnCheckForRequiredECR.lst script result.
- 20210308 - Excel BOM: the previews column would zero the height of the rows in the sheet

Service Pack: 0.2 Build: 20210305

Behavior Changes

- 20210218 - Web Client: in the preview pane, if the option to download create eDrawings on demand is not active, you can do a download and open with one click on the link. Previously you had the eDrawing creation link that would fail in an installation out of the box



- 20210218 - Web Client: showing the documents in a project does not collapse the tree anymore
- 20210217 - Admin Tools: the Company ID Manager has been redesigned to support multiple drive sharing for a single company
- 20210216 - Conversion Wizard: it is now called the .NET equivalent form by default

MechWorks PDM Conversion Wizard

Options for Administrator

CAD Software
SolidWorks

☒ Restore file system original last modified date
☐ Force database last modified date with conversion date

☐ Execute Macro
 Macro file:
 Module:
 Function:

☐ Force Conversion
☐ Zoom to fit while converting
☐ Convert drawing while the model is open
☒ Check first level reference existence
☐ Only simulate missing references
☐ Only create working set of unconverted files
☒ CAD visible

Select which documents to update to SolidWorks 2020 sp 0

☐ Convert all database
☒ Convert the selected project => Project1
☐ Traverse SubProjects

Filter

Convert everything

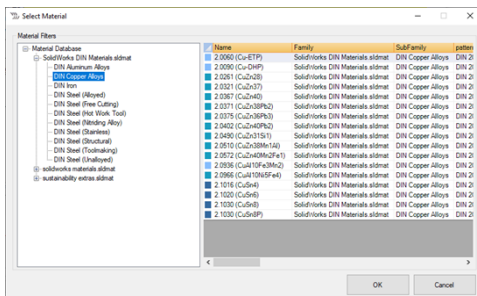
☐ Convert only local Company_id files
☒ Add custom condition (Convert only documents that match condition)

Number of workstations: 1

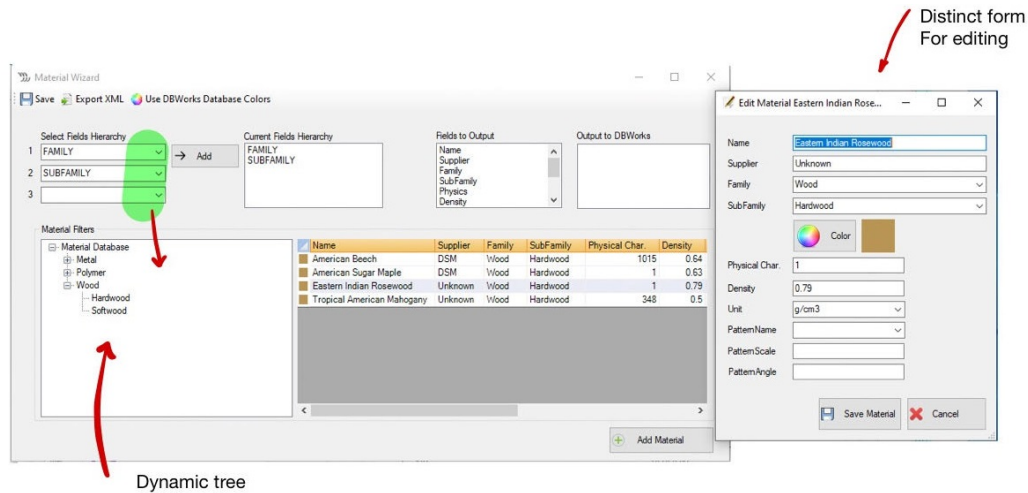
Cancel Start conversion Load query from WS table

Enhancements

- 20210305 - Material Wizard and Material Selector: both tools have been ported to .NET and partially redesigned. The Material Selector is now a modal dialog instead of a topmost window:

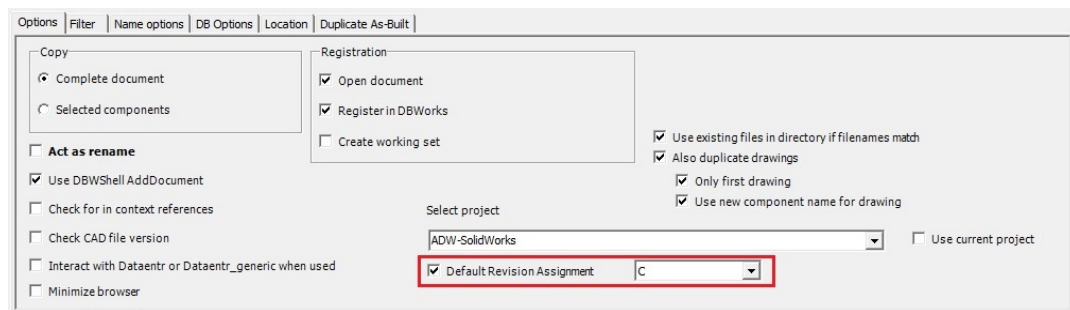


The Material Wizard has been redesigned and the editing pane has been moved to an external dialog. The tree is now dynamic and is rebuilt after each edit or change of fields in the hierarchy that defines the groups.

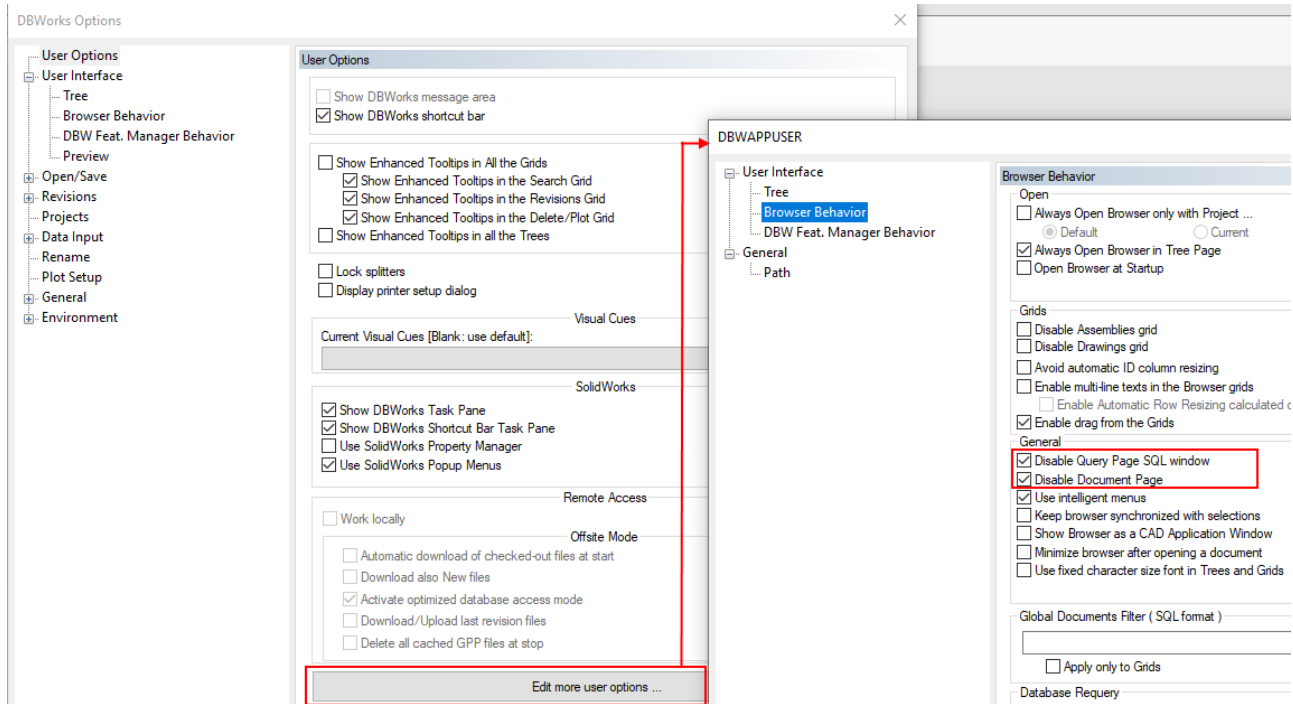


Both tools are more robust as they use only one technology, are creating logs and are easier to debug in case of unexpected behavior.

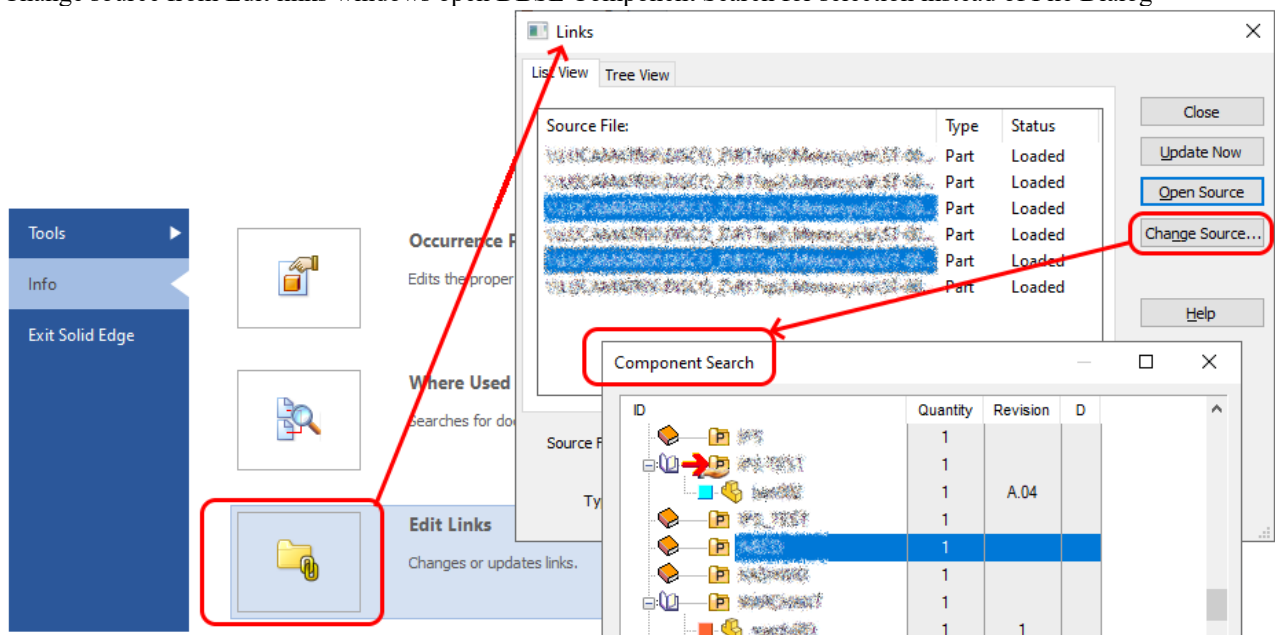
- 20210305 - Remote access: Now Local Root Directory path and Shared Path can contain with spaces
- 20210303 - Assembly Duplication Wizard: new option *Options* -> *[]Default Revision Assignment*
This new option, available in the Options tab, need to be used in pair with the PDM option *[]Use OnNewRev.lst* and the ADW options *Options*->*[]Register in DB* and *DBOptions*->*[]Automatic CheckIn/CheckOut*.
It permits to choose the starting revision from a drop down list containing the values of "MwADWRevisionsToShow.par", a file that needs to be created and placed in the PAR_DIR: it contains the values separated by a comma, ex. "RevisionList=A,B,C".



- 20210301 - Conversion Wizard: the option "Zoom to fit while converting" is available also for Inventor and SolidEdge conversions
- 20210226 – Remote files operations: Added an Activity Console message in case of failure in computing UNC path of a remote file.
- 20210222 – Options: “Hide Document Page”, “Hide Query Page SQL window” renamed to “Disable Document Page”, “Disable Query Page SQL window” and added to user options.



- 20210219 – Web Client: make the behavior of applying automatic filtering by the project, when a project is expanded in another tab, optional. The option that enables the new behavior in the parameter file WebViewerOptions.txt is: `avoid_project_filtering_from_tab`
- 20210216 – DBSolidEdge:
Change source from Edit links windows open DBSE Component Search for selection instead of File Dialog



- 20210216 – Web Client: introduced the option that allows to exclude the automatic filtering when a project is displayed in a separate tab. The string to enable the option in the file WebViewerOptions.txt is `avoid_project_filtering_from_tab`
- 20210216 - DBWorks API: Added functions `IsCorrectPin` and `IsCorrectPassword` to object `DBWarm` to check user pin and password.

Usage example:

```
...
Set pDBWInit = CreateObject("MwPDMApi.Initialize")
Set pDBWAppl = pDBWInit.StartConnection(DBWorksApplicationName)
resPwd = pDBWAppl.DBWarm.IsCorrectPassword("USER","PWD")
resPin = pDBWAppl.DBWarm.IsCorrectPin("USER","PIN")
...
```

New functionalities are available also as DBWStandardLibrary Command:

DBWIsCorrectPassword("user","password")

DBWIsCorrectPin("user","pin")

And as DBWShell Command:

DBWShell("IsCorrectPin " & "user " & "pin")

DBWShell("IsCorrectPassword " & "user " & "password")

- 20210212 – DBWCommandShell: OnCommand.lst script executed before approving Revision from Revision Data dialog

Input parameters:

@CONTEXT DBW_DATAINPUT_CONTEXT

@IS_POST_EVENT 0

@COMMAND_ID DBW_CMD_APPROVE

Revision Data

Part: OnCommand

ID	Creation/Modification	Notes
Revision 2		
Configuration_revision		
Description		
Document_unique_id	60	
Eco_id		

Previous revisions

Revision	Des...	Created_by	Creation_date	Approved_by	Approval_date	Effective_from...	Effective_u...

1

View record Visualize Compare BOMs Delete Bom Compare Models

Cancel Approve this revision OK

- 20210211 – DBWShell LoadQuery:
Command DBWShell("LoadQuery " & <uidFileName> & " WORKINGSET") doesn't fail in case of empty file: an empty working set is created.
- 20210210 - Web Client: the creation and download on demand of eDrawing files from the server has been made twice as fast, passing from an average time of 12 to 4.5 seconds. The feature requires a custom script that is available but not installed as a default feature and requires as well the installation on the server of eDrawings.
- 20210210 - Admin Tools: at start the admin tools verifies that in the parameter files of type dataentr*. * (Data Form), tables2*. * (browser tables) and revdentr*. * (revisions) the fields are existing and available in the associated view.
- 20210210 - Admin Tools: at start the admin tools verifies that the fields in the views are existing in the DOCUMENT table and if this is not the case, remove the field from the view
- 20210210 – DBWShell SWSaveAs: added optional boolean parameter *EDrawingSaveAllSheets*. If the parameter is set to 1 all the sheets of the opened drawing will be exported.
- 20210210 – API: Created new .NET API SaveAsEDrawing that let you save an opened drawing in eDrawing format.
Parameters:
fullFileName – full name of the EDRW file to save
saveAsCopy – Optional. TRUE performs 'save as copy' of the currently activated document, FALSE otherwise
saveAllSheets - Optional. TRUE export all the sheets of the opened drawing, FALSE export only the current sheet of the opened drawing. Default True.

Results:

@SWSAVEAS_SOLIDWORKS_ERROR

@SWSAVEAS_SOLIDWORKS_ERROR_STRING

@SWSAVEAS_SOLIDWORKS_WARNING

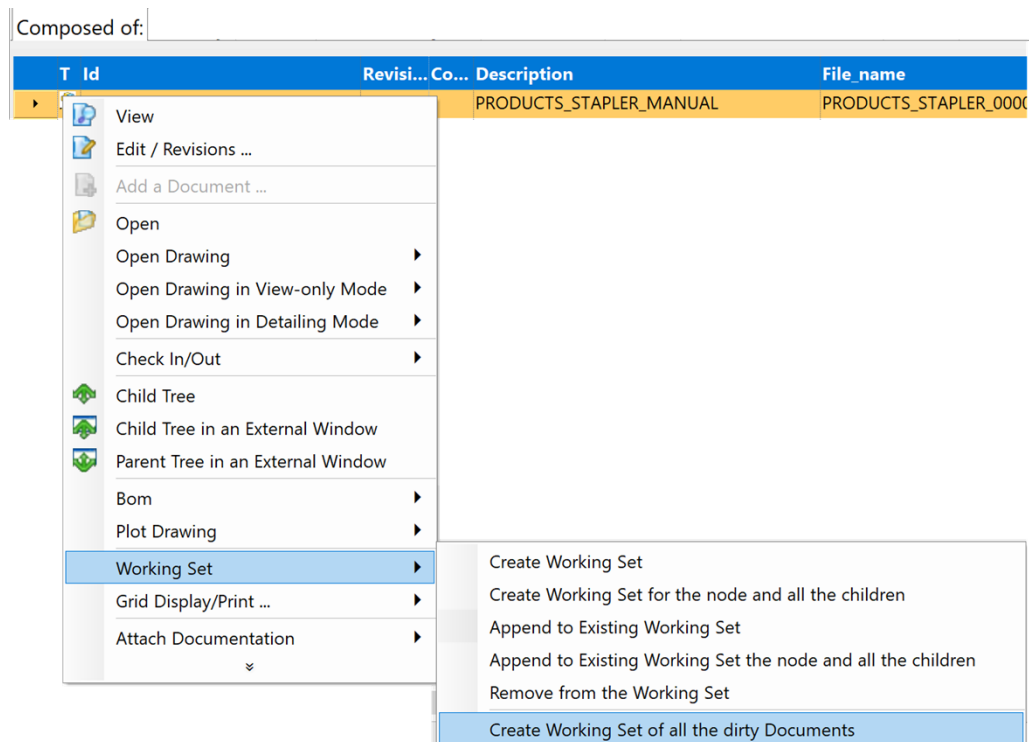
- 20210209 – Web Client: the product does not anymore the external component GhostScript to preview Office and pdf files and has therefore been removed from the setup
- 20210209 – Web Client: the creation of previews for office and pdf files has been made faster, especially for large files
- the parameter is set to 1 also the broken references are returned.
- 20210203 – Usability: Enhanced working set creation options on RMB on selected grid rows.

Added commands:

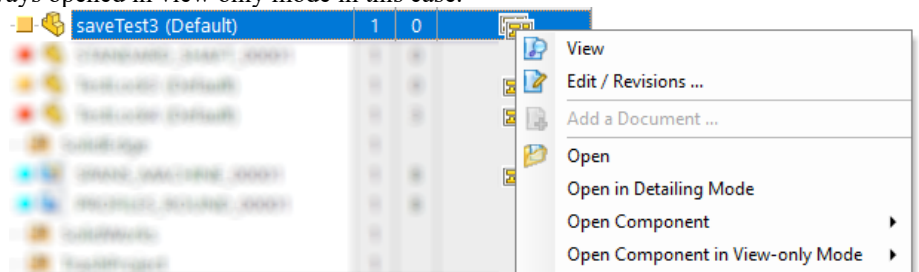
- Create Working Set for the node and all the children
- Append to Existing Working Set the node and all the children
- Create Working Set of all the dirty Documents

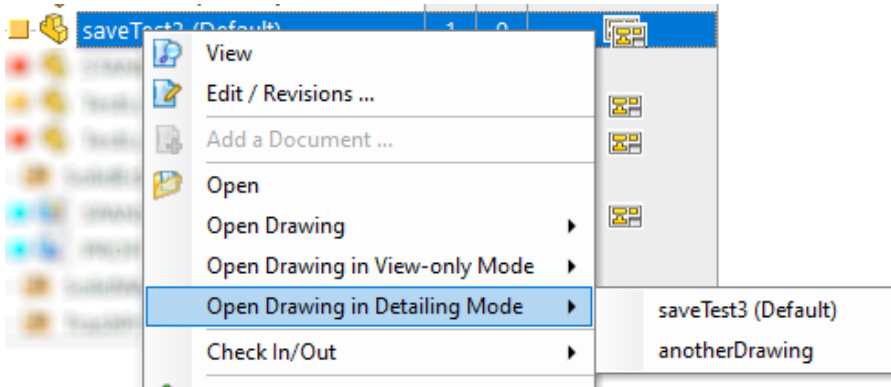
The behaviour of each command is the same as for commands in Tree RMB

If the grid belongs to Documents page the result is shown in Query page like for the Create Working set command



- 20210127 - Open File: implemented open drawing in Detailing mode via RMB at Tree/Grid level:
Detailing mode is available only from Solidworks 2020. In StandAlone and others cad version context menu does not show detailing option at all.
Detailing mode is available only for non detached drawings: open in detailing mode is disabled for detached drawings.
Detailing flag is ignored when opening a released drawings and the option
“Revisions->Open documents in view only mode if released”
is active: the released drawing is always opened in view only mode in this case.





- 20210126 - Replication Script: The check and download algorithm into the file “replicate_Files_batch.vbs” has been improved granting notably better performance updating the local files from remote sites.

Bugs fixing

- 20210304 - DBSolidEdge: using the “*User Interface->Tree-> [X] Populate Child/Parent Tree in the Sub-Tree*” option, a crash was happening when selecting items at Browser level under some circumstances
- 20210302 - Browser: using the *RMB->Order Documents By* command, the related field was not managed properly
- 20210302 - Scripting: DBWRadioCombo forced to display on top.
- 20210226 - Admin Tools: the page for managing the views was improperly indicating that the tool was also checking the database, which is a distinct activity available from the page Update Database Version
- 20210226 - Scripting: OnSearch.lst could lead to crash when used in Document Page in @SEARCH_CONDITION mode.
- 20210224 - Activate Previous Revision: the "Activate previous revision" button on right mouse button menu has been restored for generic documents when executing from StandAlone platform
- 20210223 - MwLicense Manager: in case of borrowed license, there was a problem in DBAlone license evaluation
- 20210223 - Data Input Form: Even if the option Data Input -> [X] Hide ‘Used By’ List in Data Input Form was set, resizing the data input form showed the ‘Used By’ tab.
- 20210223 - DBSolidEdge: fixed Physical Qty displayed value issue related to regional settings
- 20210222 - Options: Search result filtered correctly in APPUSER Option Dialog. Switch from APPUSER to Global option dialog handled correctly
- 20210219 - DBAutoCAD: under specific customized circumstances, custom properties were not updated
- 20210218 - DBSolidEdge: fixed Change Quantity and Edit Bom issue related to regional settings.
- 20210217 - Web Client: clicking on the eDrawing link inside the preview pane would display a message that the script is not available on the server. Now the ability to create eDrawings on the server on demand requires an activation adding the option ‘enable_edrawing_creation’ in the file WebViewerOptions.txt
- 20210217 – Revisions: fixed a bug in restore previous revision procedure: restoring a node not in Released state caused wrong reference folder in restored drawings under certain conditions
- 20210211 - DBWGrid (used in Open Wizard and other tools): the support for visual cues has been added as it was missing
- 20210211 - Admin Tools: the system checks that applied when starting DBCustomizer have been ported and increased with Admin Tools:
 - added inconsistencies control for file PAR\db2htm.par
 - missing fields are being removed from views
 - fields in the parameter files tables2.dfl missing from the related view (and not just the DOCUMENT table) are notified as inconsistencies
 - indexes in database tables are checked as they were in DBCustomizer
- 20210211 - MwLicenseManager: under some circumstances, there was an error in serial number evaluation happening in case of DBWorks/DBAlone floating license installation
- 20210210 - High-DPI: Improved the High-DPI experience. Several bugs fixed and text/icons scaled correctly accordingly to monitor dpi settings. DBWCONN.PAR parameters:
 DBWORKS_FORCE_HIGH_DPI_MODE
 DBWORKS_FORCE_HIGH_DPI_TEXT_RATIO
 DBWORKS_FORCE_HIGH_DPI_ICON_RATIO
 are deprecated: there is no more need for hardcoded values as dpi ratio is automatically evaluated and applied.
- 20210210 - Setup: installing the PDM without Standalone caused some registry keys missing (i.e. the DBWORKS INSTALL_LANGUAGE key)
- 20210209 – API: DBWShell commands coming from an out of process script would not be executed onto a Stand Alone.
- 20210209 – Web Client: the tester page at the end of the installation would not display its state

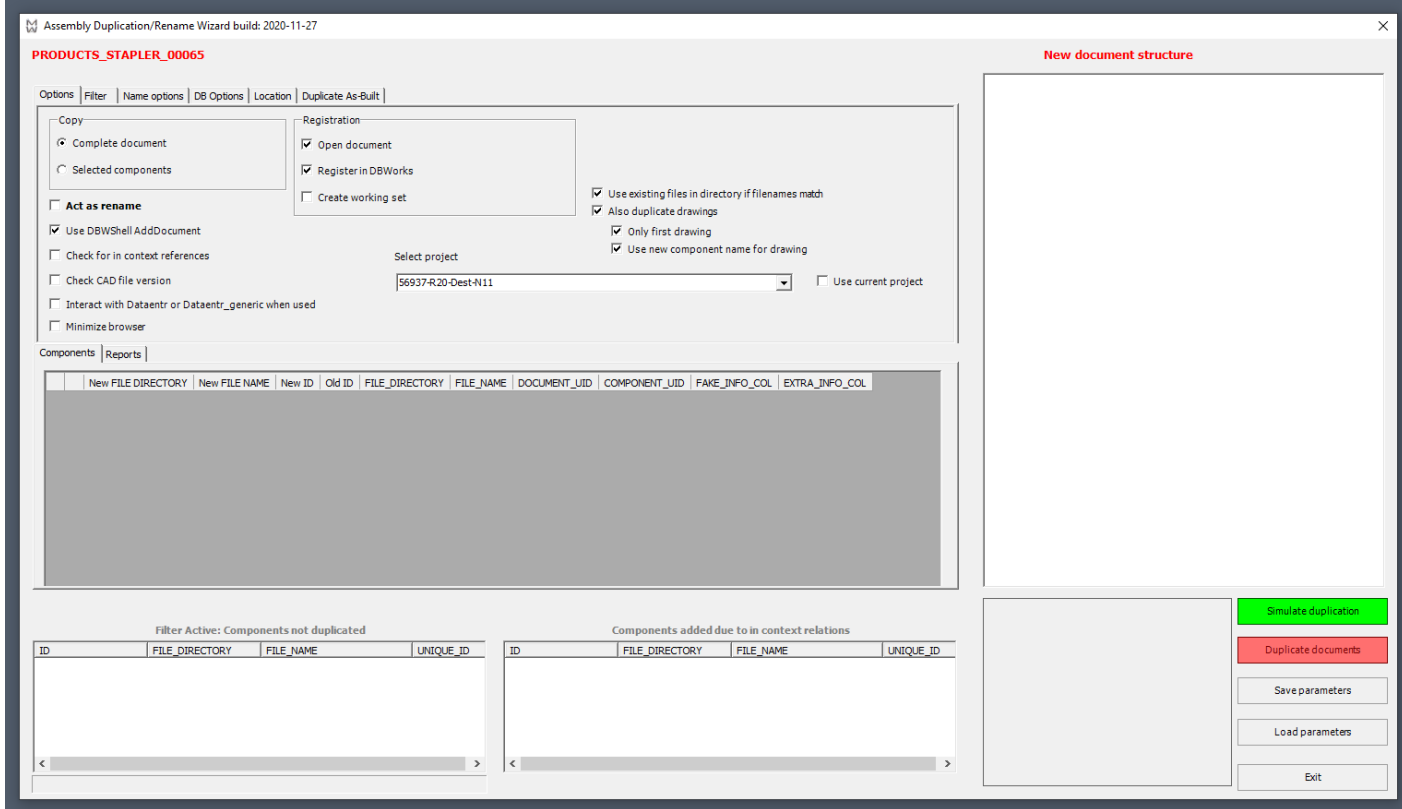
- 20210204 - DBSolidEdge: Under certain conditions, temporary standard part files (documents with filename beginning with “~varmod”) were wrongly saved in the PDM
- 20210204 - Assembly Duplication Wizard: in Inventor and SolidEdge, revision properties of the duplicated documents were not resetted
- 20210204 - Assembly Duplication Wizard: custom properties were overwritten even with the PDM option "Never overwrite imported custom properties" active
- 20210204 – Working Set: Creating a working set in the query page with more then 500 elements and sorting the working set by a column before removing some number of rows made the grid miscalculate the number of element in the set.
- 20210204 - DBSolidEdge: fixed splitter position issue related to regional settings.
- 20210201 - Assembly Duplication Wizard: during duplication of an assembly the value of BOOLEAN fields were not duplicated even if selected in the fields to import
- 20210129 - Setup: during the upgrade of the PDM version or the change of installed PDM products, the setup of PDM changed the value registry keys INSTALL_LANGUAGE wrapping the language XX with “=XX”
- 20210128 - Revisions: Recursive Approval: due to a regression introduced with previous fix ” 20201216 - Recursive Approve: It was possible, using an administrator personality, recursively approve a file even if it was opened by another user”, the recursive functionality was disabling opened documents
- 20210127 - Event Log File delete: file unique id added to event log entry on file delete
- 20210127 – Web Client: the download and open of the last approved version and of the previous revisions of files could fail for versions approved using DBWorks R16 or older
- 20210126 - Replication Script: Under certain circumstances, using the replication script option DOWNLOADNONEXISTINGFILES=1, it was impossible to download the remote files .
- 20210125 – Scripting: in certain cases the REPLICATION_PARTNERS.SPT script was raising an unwanted messagebox after having submitted a new replication partner in the specific form.
- 20210121 - SendMail: SendMail procedure is compliant with TLS. To activate TLS support mail parameter file must contains “USE_TLS”. TLS is mandatory with office365. TLS is necessary but not sufficient condition: mail delivery success depends on office365 SMTP configuration.
- 20210120 - Scripting: DBWGetDBWorksBuild lib function was not working anymore in Solidworks 2021 environment.
- 20210115 - Scripting: the execution of Revision_output_Pdf_booklet.vbs script was not performed properly
- 20210118 - ActivityConsole: avoid write messages if no error happens on File unlock for delete.
- 20210112 - DBDraftSight: solved installation dependencies problems
- 20210111 - Scripting: at startup CheckDatabaseIndexesFragmentation.vbs script was launching standalone client x86 even if invoked by standalone client x64.
- 20201228 - The *Check for updates* functionality, available from the About dialog, was not working properly.
- 20201228 - Browser: under some circumstances, it is fixed a repaint problem happening when the Wait Dialog is shown
- 20201223 - DBSolidEdge: working on non-English installations, a quick search of numeric value was not working
- 20201221 - Scripting: using DBWValidFileName, the function wrongly provided name validation in case of filename containing “:”

Service Pack: 0.1 Build: 20201218

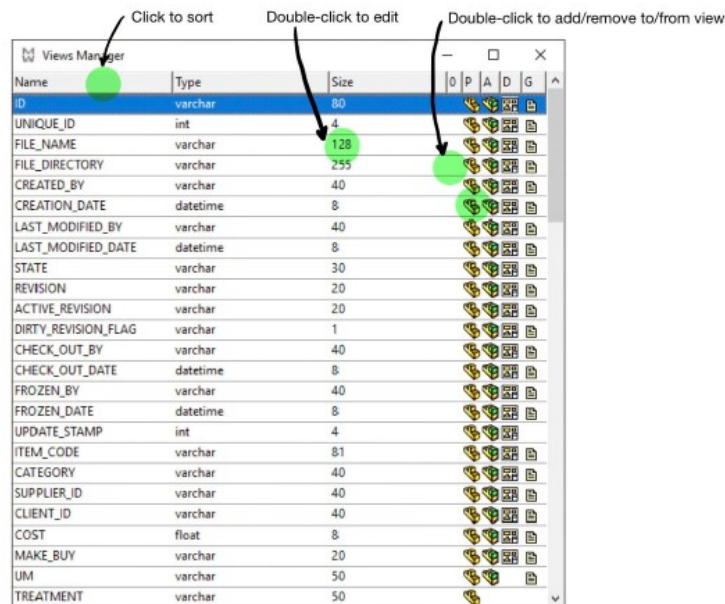
Enhancements

- 20201214 – Remote Access Download: With the option *Revisions -> Files -> [X] Use alternative path list for revisions files* checked was not able to find and download the remote revisions files. Now they are downloaded in a local folder that must have the same path of the remote folder where the files have been found. So it is necessary the use of Network drives to map the folders. It is also necessary to specify the mapping in the DBW_COMPANY_INFO table and set the option *Environment -> Remote Access -> [X] Use Multiple Network Drives*
- 20201203 - DBAutoCAD: added AutoCAD2021 support
- 20201201 – Event Log RemoteAccess: Added date and time columns to the showed table.
- 20201130 - Assembly Duplication Wizard - added option "Use existing files in directory if filename match". The ADW tool automatically use existing files in directory if filename match, so this option will be checked by default; unchecking

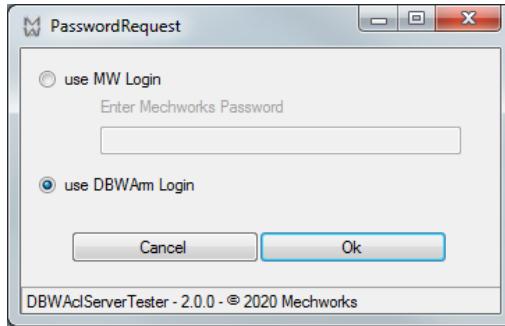
this option will warn the user if any file with the same name exist in the destination directory, preventing the duplication.



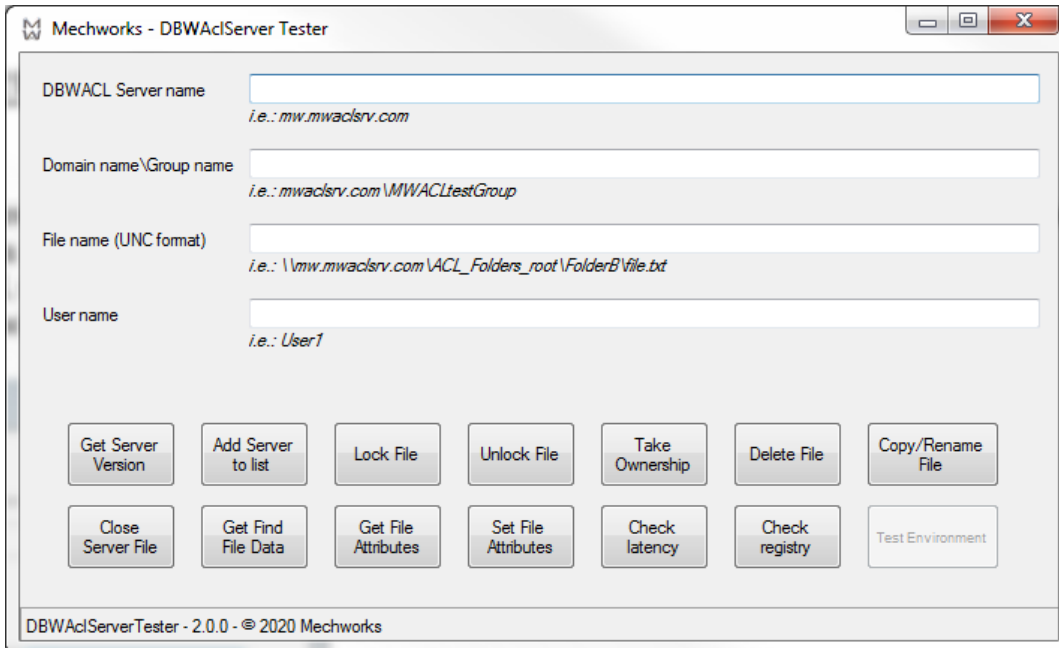
- 20201120 – Admin Tools: the tool to manage the fields of the DOCUMENT table, its views and the field size has been entirely redesigned for ease of use:



- 20201111 – Admin Tools: new tool to test DBWACLServer functionalities. This tool is password protected, so only administrative persons are allowed to use it. At startup a credential request window is appearing:



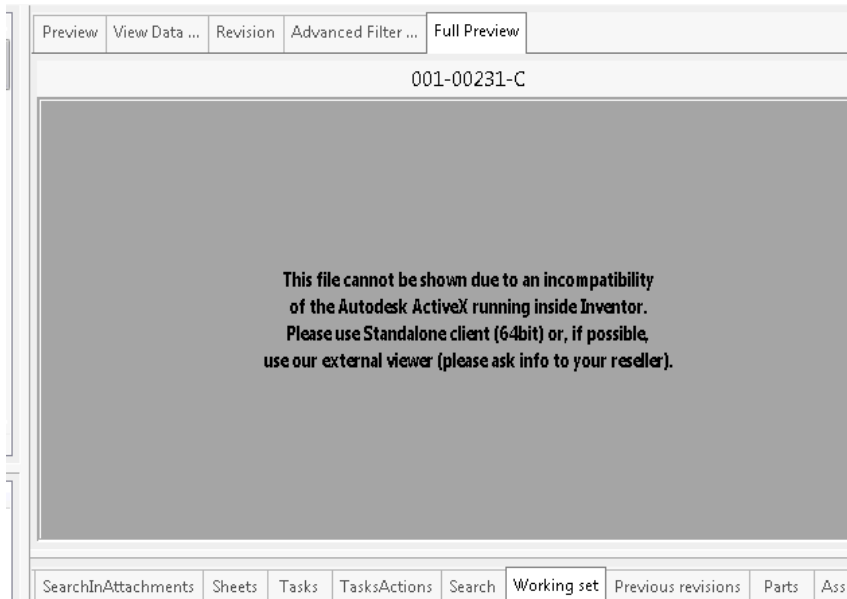
The user can use a DBWArm administrative credentials or a reseller provided specific password. Then the main dialog is shown:



Some of the basic DBWAcIServer functionalities are testable.

Bugs fixing

- 20201216 - Event Log Viewer: the new executable has been made compatible with the previous equivalent vsgroup.exe of R17 in order to display custom queries
- 20201216 - Recursive Approve: It was possible, using an administrator personality, recursively approve a file even if it was opened by another user
- 20201216 - Server-side setup: during the update of an existing MWLicenseManager installation, the file MwLicenseManager.config was overwritten, removing the potential customizations made by the user
- 20201214 - Full Preview: the Standalone 32 bit application caused a crash instead of showing a message warning that the feature was not supported in 32 bit platform
- 20201211 - Server-side setup: the setup did not copy the batch files (dos and powershell) used to assign needed privileges to the DBWAcIServer admin user
- 20201211 - Server-side setup: the setup did not set the failure actions for installed services as recommended by our help. The instal/uninstall scripts for DBWAcIServer has been updated accordingly too.
- 20201210 – Take Ownership: Having the option Remote Access Mode option [X] Take/Release ownership on Increment Revision/Approve enabled, under certain circumstances, the ownership was not returned to the original owner approving the record
- 20201210 - Full preview: DBInventor caused a crash when trying to show the inventor file types (.IPT, .IAM, .DWG and .IDW), due to an incompatibility of the used third-party Autodesk component with the Inventor application. Since the full preview is not yet available in such a condition, for those file types a message is shown in the full preview embedded in the browser (available in the Document page, Tree Page and Full preview Page):



- 20201202 - DBWArm: it is fixed a problem of missed document type detection causing the Edit command to be enabled via RMB at Tree/Grid level even with the "*Modification->[X] Edit Data assembly/part/drawing*" or "*Modification->[X] Edit Data of projects*" or "*Modification->[X] Edit Data of generic documents*" being denied
- 20201127 - TaskManager: when upgrading from R17 to R20, a field of table DBW_TASK_EXEC_NODES was needed but not checked for existence during startup
- 20201126 - DBWorks API: Object MWScriptGUI.IODialog: the object raised an error when using method ShowSave, for example in Office integrations during a SaveAs operation
- 20201125 - Full preview: switching from a managed file type to a unmanaged one (showing the error message) and then back to the same previous type, the full preview still showed the error message
- 20201123 - DBSolidEdge: working on non-English installations, it is fixed a problem causing problem with floating data values due to regional settings
- 20201120 - ProjectUser Admin Tools: Under certain circumstances the projects displayed were not updated after changes in the ProjectUser Admin tool
- 20201120 - DBWorks API: Object MWScriptGUI.DBWPar: the object raise an error when changing some file properties causing wrong behavior for example in Conversion Wizard when the option "*[X] Restore file system original last modified date*" is activated
- 20201118 - Full preview: when DBWorks was not chosen among the components to be installed, the Full Preview for PDF and OFFICE documents was not working
- 20201117 - Scripting: the NEVER_INSERT_SW_ENVELOP_COMPONENTS option was not accessible using DBWShell GetOption/Option
- 20201116 - Database: the distributed GERMAN database was wrongly containing the field ELTERN_KIND.PARENT_CHILD_REVISION
- 20201116 - Assembly Duplication Wizard: under certain conditions, the option AutoCheckin/Out was not working properly
- 20201111 – Scripting: Dataentr.LIB fixed an error overflow scenario that caused a cInt error
- 20201110 - DBInventor: fixed a problem concerning the loading of the add-in in Inventor2021
- 20201110 - Scripting: the DRAWING_BOM_SHOW_EXTRACOLUMN option was not accessible using DBWShell GetOption/Option
- 20201030 - Replace Reference: document names were not shown in “Replace a Component” dialog
- 20201030 - SolidWorks 2020: Options->Environment->[X] Use DBWorks for Searching Solidworks Components: due to a behavior change in the SolidWorks 2020 API, the DBWorks mini browser was no longer popping up when inserting a Part into another Part, for creating a derived Part
- 20201029 - File Loading Algorithm: Under certain circumstances the Options defined paths for the folders schema, sql, lst, xls, user, par were ignored, keep loading them from the GPP path.
- 20201029 - Tree: working with the *Options->User Interface->Tree->Show description in the Trees->Highlight 'fake' components and quantities in the Tree*, the fake status was lost in case of PARENT_CHILD_MAKE_BUY = NO_BOM
- 20201026 - Revisions: Recursive operators: under some circumnstances, the linked drawing documents are inserted multiple times causing inconsistencies in document management
- 20201023 - Category Maker: a high numeric value in the clipboard would crash the RMB popup menu from a category

- 20201023 - Drag&Drop: Drag&Drop a CAD file into the browser registers the file and now automatically check-in the file if the option Open/Save -> Save as -> [X] Automatic check-in after a DBWorks 'Save as ...' is flagged and automatically check-out the file if the option Open/Save -> Save as -> [X] Automatic check-out after the check-in is flagged.
- 20201022 - Word Add-In: during Check-In operation, rules from Revision Outputs were not applied
- 20201022 - Admin Tools: DBWARM would load the connection parameters from the local folder instead than from the shared one
- 20201021 - Admin Tools: the entries were not localized into German
- 20201020 - DBWARM: under certain circumstances it was possible to login even if cancel button was pressed.
- 20201020 - Options: OffSite Mode options were not translated even if the message file contained the proper translations.
- 20201015 - DBWAclServer: it is fixed a problem of wrong server name assignment causing redundant client/server communication
- 20201013 - DBInventor: it is fixed a crash happening when opening an assembly in Express-Mode under some circumstances
- 20201013 - DBSolidEdge/DBInventor: when performing a revision restore for specific documents with the option *Revisions->Files->[X]Select components to restore*, unselected documents were also copied if used in pair with *[X]Restore revisions in a different directory*